

Surge suppression, RC element for contactors Size S6 / S10 / S12 for US = 127 ... 240 V AC / Screw terminals



General technical data:

product brandname		SIRIUS
Product designation		surge suppressor
Design of the surge suppressor		with RC elements

Control circuit/ Control:

Type of voltage of the control supply voltage		AC/DC
Control supply voltage frequency		
• 1 rated value	Hz	50
• 2 rated value	Hz	60
Control supply voltage 1		
• at DC		
— Initial rated value	V	150
— Final rated value	V	250
• at AC		
— at 50 Hz Initial rated value	V	127
— at 50 Hz Final rated value	V	240
— at 60 Hz Final rated value	V	240
— at 60 Hz Initial rated value	V	127

## Certificates/ approvals:

General Product Approval	Functional Safety/Safety of Machinery	Declaration of Conformity	Test Certificates
--------------------------	---------------------------------------	---------------------------	-------------------



CSA



UR



[Type Examination Certificate](#)



EG-Konf.

[Special Test Certificate](#)

## Shipping Approval



ABS



BUREAU VERITAS



DNV



GL



LRS



PRS

## Shipping Approval

other



RINA



RMRS

[Confirmation](#)

[Environmental Confirmations](#)

[Miscellaneous](#)

## Further information

**Information- and Downloadcenter (Catalogs, Brochures,...)**

<http://www.siemens.com/industrial-controls/catalogs>

**Industry Mall (Online ordering system)**

<http://www.siemens.com/industrymall>

**Cax online generator**

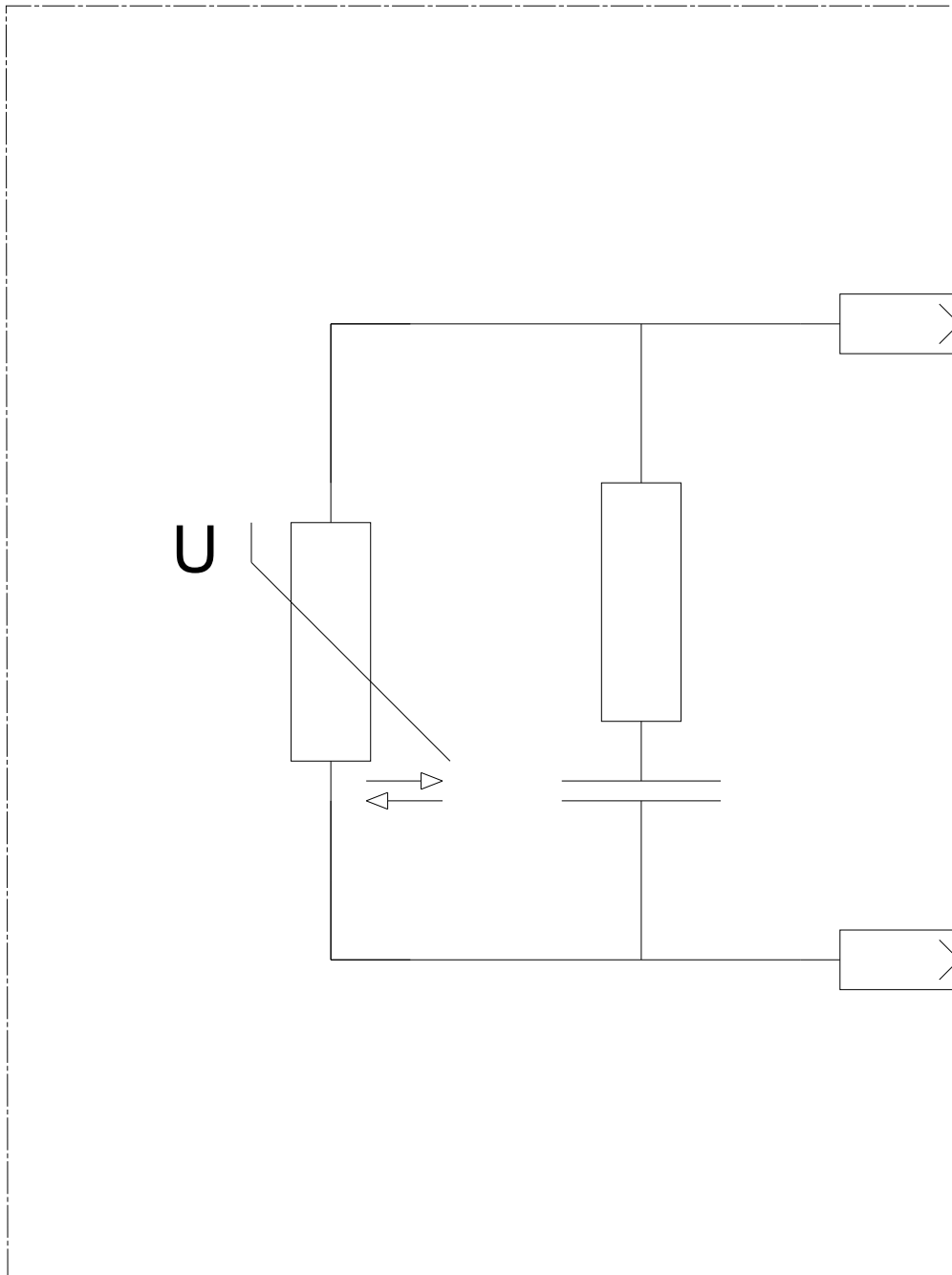
<http://support.automation.siemens.com/WW/CAXorder/default.aspx?lang=en&mfb=3RT1956-1CD00>

**Service&Support (Manuals, Certificates, Characteristics, FAQs,...)**

<https://support.industry.siemens.com/cs/ww/en/ps/3RT1956-1CD00>

**Image database (product images, 2D dimension drawings, 3D models, device circuit diagrams, EPLAN macros, ...)**

[http://www.automation.siemens.com/bilddb/cax\\_de.aspx?mfb=3RT1956-1CD00&lang=en](http://www.automation.siemens.com/bilddb/cax_de.aspx?mfb=3RT1956-1CD00&lang=en)



last modified:

06/20/2017