

SURGE SUPPRESSOR, RC ELEMENT, 24...48V AC, 24...70V DC, FOR CONTACTORS SIZE S2



Figure similar

General technical data:		
product brandname		SIRIUS
Product designation		surge suppressor
Size of contactor		S2
Design of the surge suppressor		RC element
Ambient temperature		
• during storage	°C	-40 ... +80
• during operation	°C	-25 ... +60
Control circuit/ Control:		
Type of voltage of the control supply voltage		AC/DC
Control supply voltage frequency		
• 1 rated value	Hz	50
• 2 rated value	Hz	60
Control supply voltage 1		
• at DC		
— Initial rated value	V	24
— Final rated value	V	70

- at AC
  - at 50 Hz Initial rated value
  - at 50 Hz Final rated value
  - at 60 Hz Final rated value
  - at 60 Hz Initial rated value

V	24
V	48
V	48
V	24

#### Installation/ mounting/ dimensions:

Mounting position		any
Mounting type		clip-on
Width	mm	30
Height	mm	30
Depth	mm	14.5

#### Certificates/ approvals:

Certificate of suitability	CE / UL / CSA / CCC		
----------------------------	---------------------	--	--

General Product Approval	Declaration of Conformity	Test Certificates	Shipping Approval
--------------------------	---------------------------	-------------------	-------------------



[Type Test Certificates/Test Report](#)



#### Shipping Approval

#### other



[Environmental Confirmations](#)

[Confirmation](#)

#### Further information

**Information- and Downloadcenter (Catalogs, Brochures,...)**

<http://www.siemens.com/industrial-controls/catalogs>

**Industry Mall (Online ordering system)**

<http://www.siemens.com/industrymall>

**Cax online generator**

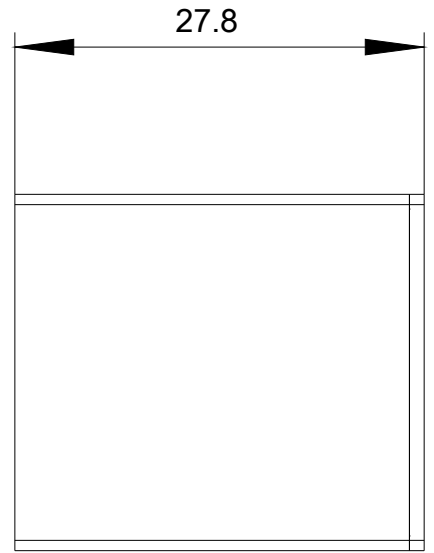
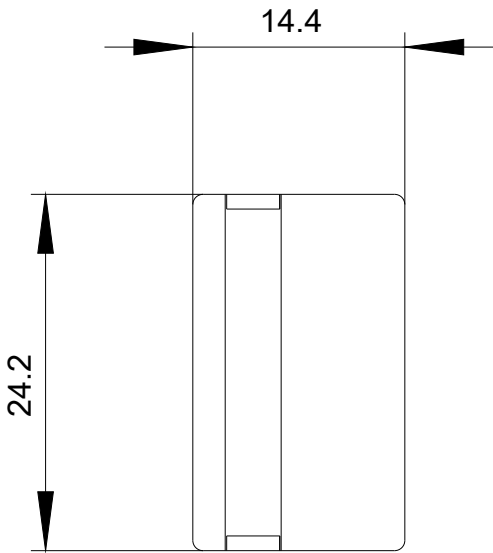
<http://support.automation.siemens.com/WW/CAXorder/default.aspx?lang=en&mlfb=3RT2936-1CB00>

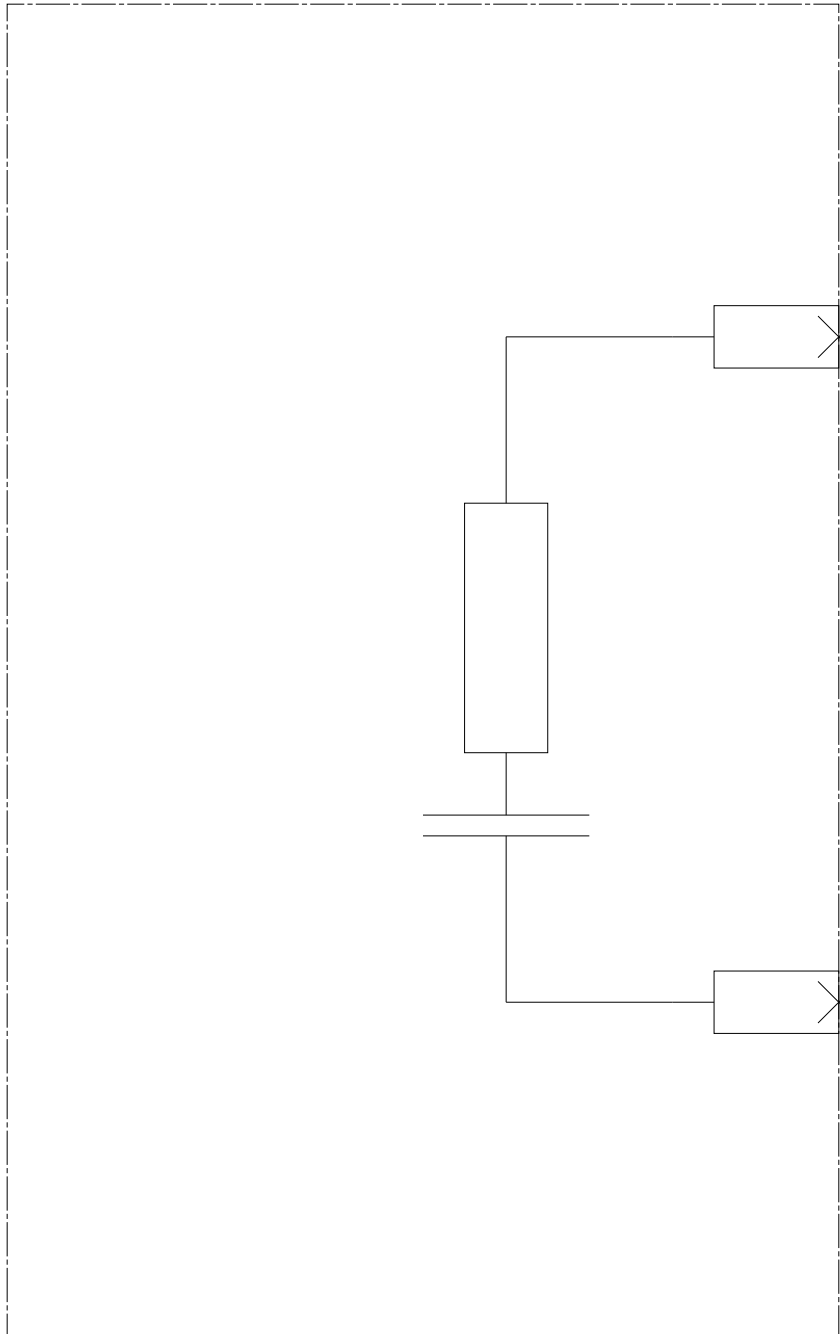
**Service&Support (Manuals, Certificates, Characteristics, FAQs,...)**

<https://support.industry.siemens.com/cs/ww/en/ps/3RT2936-1CB00>

**Image database (product images, 2D dimension drawings, 3D models, device circuit diagrams, EPLAN macros, ...)**

[http://www.automation.siemens.com/bilddb/cax\\_de.aspx?mlfb=3RT2936-1CB00&lang=en](http://www.automation.siemens.com/bilddb/cax_de.aspx?mlfb=3RT2936-1CB00&lang=en)





last modified:

06/09/2017