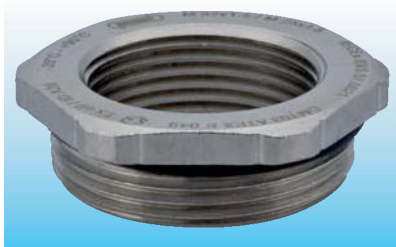
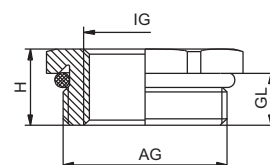


## Ex Příslušenství

### RSD-MS-Ex

**Metr.**


|                         |   |
|-------------------------|---|
| <b>Materiál</b>         | poniklovaná mosaz                             |
| <b>O-kroužek</b>        | NBR / VMQ                                     |
| <b>Krytí</b>            | IP 68 – 10 bar / IP 69K                       |
| <b>Pracovní teplota</b> | -20 °C – 95 °C (NBR)<br>-60 °C – 180 °C (VMQ) |

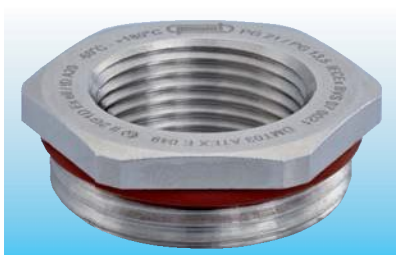

**II 2G 1D**


Mezinárodní certifikáty najdete na str. 176 nebo na internetu: [www.hummel.com](http://www.hummel.com)

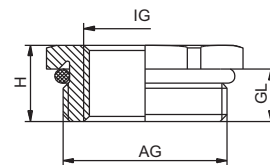
| AG         | IG         | GL | H  | Obj. č NBR<br>-20 °C – 95 °C | Obj. č VMQ<br>-60 °C – 180 °C |
|------------|------------|----|----|------------------------------|-------------------------------|
| M 16 x 1,5 | M 12 x 1,5 | 5  | 17 | 1.078.1612.50                | 1.079.1612.50                 |
| M 20 x 1,5 | M 12 x 1,5 | 6  | 22 | 1.078.2012.50                | 1.079.2012.50                 |
| M 20 x 1,5 | M 16 x 1,5 | 6  | 22 | 1.078.2016.50                | 1.079.2016.50                 |
| M 25 x 1,5 | M 16 x 1,5 | 7  | 29 | 1.078.2516.50                | 1.079.2516.50                 |
| M 25 x 1,5 | M 20 x 1,5 | 7  | 29 | 1.078.2520.50                | 1.079.2520.50                 |
| M 32 x 1,5 | M 16 x 1,5 | 8  | 34 | 1.078.3216.50                | 1.079.3216.50                 |
| M 32 x 1,5 | M 20 x 1,5 | 8  | 34 | 1.078.3220.50                | 1.079.3220.50                 |
| M 32 x 1,5 | M 25 x 1,5 | 8  | 34 | 1.078.3225.50                | 1.079.3225.50                 |
| M 40 x 1,5 | M 20 x 1,5 | 8  | 43 | 1.078.4020.50                | 1.079.4020.50                 |
| M 40 x 1,5 | M 25 x 1,5 | 8  | 43 | 1.078.4025.50                | 1.079.4025.50                 |
| M 40 x 1,5 | M 32 x 1,5 | 8  | 43 | 1.078.4032.50                | 1.079.4032.50                 |
| M 50 x 1,5 | M 25 x 1,5 | 9  | 55 | 1.078.5025.50                | 1.079.5025.50                 |

| AG         | IG         | GL | H  | Obj. č NBR<br>-20 °C – 95 °C | Obj. č VMQ<br>-60 °C – 180 °C |
|------------|------------|----|----|------------------------------|-------------------------------|
| M 50 x 1,5 | M 32 x 1,5 | 9  | 55 | 1.078.5032.50                | 1.079.5032.50                 |
| M 50 x 1,5 | M 40 x 1,5 | 9  | 55 | 1.078.5040.50                | 1.079.5040.50                 |
| M 63 x 1,5 | M 32 x 1,5 | 10 | 65 | 1.078.6332.50                | 1.079.6332.50                 |
| M 63 x 1,5 | M 40 x 1,5 | 10 | 65 | 1.078.6340.50                | 1.079.6340.50                 |
| M 63 x 1,5 | M 50 x 1,5 | 10 | 65 | 1.078.6350.50                | 1.079.6350.50                 |

### RSD-MS-Ex

**PG**


|                         |   |
|-------------------------|---|
| <b>Materiál</b>         | poniklovaná mosaz                             |
| <b>O-kroužek</b>        | NBR / VMQ                                     |
| <b>Krytí</b>            | IP 68 – 10 bar / IP 69K                       |
| <b>Pracovní teplota</b> | -20 °C – 95 °C (NBR)<br>-60 °C – 180 °C (VMQ) |


**II 2G 1D**


Mezinárodní certifikáty najdete na str. 176 nebo na internetu: [www.hummel.com](http://www.hummel.com)

| AG      | IG      | GL  | H    | H  | Obj. č NBR<br>-20 °C – 95 °C | Obj. č VMQ<br>-60 °C – 180 °C |
|---------|---------|-----|------|----|------------------------------|-------------------------------|
| PG 9    | PG 7    | 6   | 8,8  | 17 | 1.078.0907.01                | 1.079.0907.01                 |
| PG 11   | PG 7    | 6   | 9    | 20 | 1.078.1107.01                | 1.079.1107.01                 |
| PG 11   | PG 9    | 6   | 9    | 20 | 1.078.1109.01                | 1.079.1109.01                 |
| PG 13,5 | PG 9    | 6,5 | 9,5  | 22 | 1.078.1309.01                | 1.079.1309.01                 |
| PG 16   | PG 9    | 6,5 | 9,5  | 24 | 1.078.1609.01                | 1.079.1609.01                 |
| PG 16   | PG 11   | 6,5 | 9,5  | 24 | 1.078.1611.01                | 1.079.1611.01                 |
| PG 16   | PG 13,5 | 6,5 | 9,5  | 24 | 1.078.1613.01                | 1.079.1613.01                 |
| PG 21   | PG 11   | 7   | 10,3 | 30 | 1.078.2111.01                | 1.079.2111.01                 |
| PG 21   | PG 13,5 | 7   | 10,3 | 30 | 1.078.2113.01                | 1.079.2113.01                 |
| PG 21   | PG 16   | 7   | 10,3 | 30 | 1.078.2116.01                | 1.079.2116.01                 |
| PG 29   | PG 16   | 8   | 11,5 | 40 | 1.078.2916.01                | 1.079.2916.01                 |
| PG 29   | PG 21   | 8   | 11,5 | 40 | 1.078.2921.01                | 1.079.2921.01                 |

| AG    | IG    | GL | H    | H  | Obj. č NBR<br>-20 °C – 95 °C | Obj. č VMQ<br>-60 °C – 180 °C |
|-------|-------|----|------|----|------------------------------|-------------------------------|
| PG 36 | PG 21 | 9  | 12,5 | 50 | 1.078.3621.01                | 1.079.3621.01                 |
| PG 36 | PG 29 | 9  | 12,5 | 50 | 1.078.3629.01                | 1.079.3629.01                 |
| PG 42 | PG 29 | 10 | 13,5 | 57 | 1.078.4229.01                | 1.079.4229.01                 |
| PG 42 | PG 36 | 10 | 13,5 | 57 | 1.078.4236.01                | 1.079.4236.01                 |
| PG 48 | PG 36 | 10 | 13,5 | 64 | 1.078.4836.01                | 1.079.4836.01                 |
| PG 48 | PG 42 | 10 | 13,5 | 64 | 1.078.4842.01                | 1.079.4842.01                 |