

HOLDER FOR 4 MODULES, PLASTIC

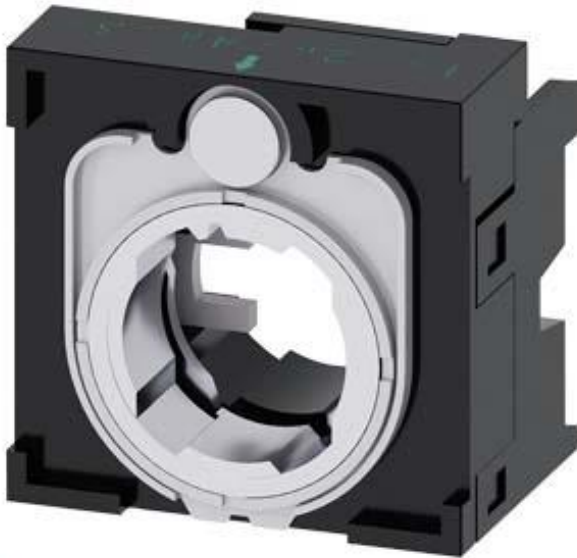


Figure similar

product brandname	SIRIUS ACT
Product designation	Holders
Product type designation	3SU1
Manufacturer's article number	
<ul style="list-style-type: none"> <li>of the supplied holder</li> </ul>	<a href="#">3SU1500-0AA10-0AA0</a>
<b>Actuator</b>	
Design of the operating mechanism	4-way without module
Number of contact modules	0
<b>Holder</b>	
Material of the holder	Plastic
<b>Display</b>	
Number of LED modules	0
<b>General technical data</b>	
Product function	
<ul style="list-style-type: none"> <li>positive opening</li> </ul>	No
Product component	

• diode	No
• lamp transformer	No
• Light source	No
• series resistor	No
<b>Insulation voltage</b>	
• rated value	500 V
<b>Degree of pollution</b>	3
<b>Surge voltage resistance rated value</b>	6 kV
<b>Vibration resistance</b>	
• acc. to IEC 60068-2-6	10 ... 500 Hz: 5g
• for railway applications acc. to DIN EN 61373	Category 1, Class B
<b>Mechanical service life (switching cycles)</b>	
• typical	10
<b>Equipment marking</b>	
• acc. to DIN EN 61346-2	U
• acc. to DIN EN 81346-2	U



<b>Auxiliary circuit</b>	
<b>Number of NC contacts</b>	
• for auxiliary contacts	0
<b>Number of NO contacts</b>	
• for auxiliary contacts	0
<b>Number of CO contacts</b>	
• for auxiliary contacts	0

<b>Connections/Terminals</b>	
<b>Tightening torque of the screws in the bracket</b>	1 ... 1.2 N·m

<b>Ambient conditions</b>	
<b>Ambient temperature</b>	
• during operation	-25 ... +70 °C
• during storage	-40 ... +80 °C
Environmental category during operation acc. to IEC 60721	3M6, 3S2, 3B2, 3C3, 3K6 (with relative air humidity of 10 ... 95 %, no condensation in operation permitted)

<b>Installation/ mounting/ dimensions</b>	
<b>Mounting type</b>	without
• of modules and accessories	Front plate mounting
<b>Height</b>	40 mm
<b>Width</b>	40 mm
<b>Shape of the installation opening</b>	round
<b>Installation width</b>	40 mm
<b>Installation depth</b>	32.1 mm

<b>Certificates/approvals</b>	
-------------------------------	--

General Product Approval	Declaration of Conformity	Test Certificates		other
 CSA	 EG-Konf.	<a href="#">Werksbescheinigung</a>	<a href="#">spezielle Prüfbescheinigungen</a>	<a href="#">Bestätigungen</a>

#### Further information

**Information- and Downloadcenter (Catalogs, Brochures,...)**

<http://www.siemens.com/industrial-controls/catalogs>

**Industry Mall (Online ordering system)**

<https://mall.industry.siemens.com/mall/en/en/Catalog/product?mfb=3SU1500-0BA10-0AA0>

**Cax online generator**

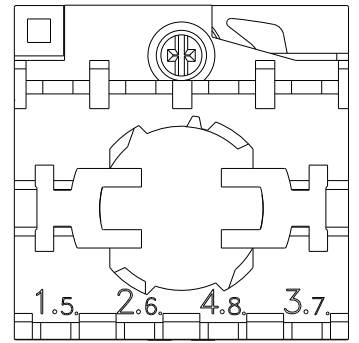
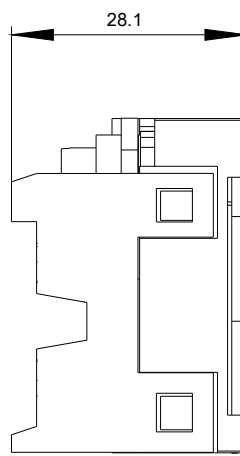
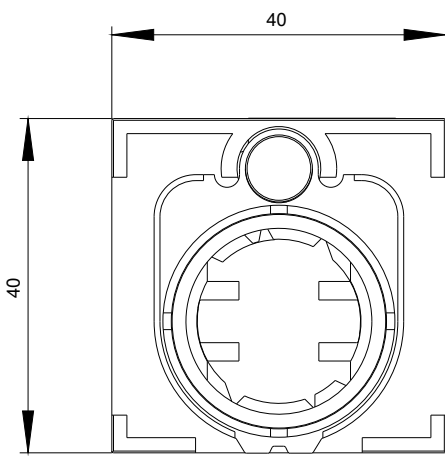
<http://support.automation.siemens.com/WW/CAXorder/default.aspx?lang=en&mfb=3SU1500-0BA10-0AA0>

**Service&Support (Manuals, Certificates, Characteristics, FAQs,...)**

<https://support.industry.siemens.com/cs/ww/en/ps/3SU1500-0BA10-0AA0>

**Image database (product images, 2D dimension drawings, 3D models, device circuit diagrams, EPLAN macros, ...)**

[http://www.automation.siemens.com/bilddb/cax\\_de.aspx?mfb=3SU1500-0BA10-0AA0&lang=en](http://www.automation.siemens.com/bilddb/cax_de.aspx?mfb=3SU1500-0BA10-0AA0&lang=en)



last modified:

05/01/2017