

PUSHBUTTON, 22MM, ROUND, PLASTIC, RED, FLAT BUTTON, LATCHING, PUSH TO UNLATCH



Figure similar

|   |                             |
|---|-----------------------------|
| product brandname                           | SIRIUS ACT                  |
| Product designation                         | Pushbuttons                 |
| Product type designation                    | 3SU1                        |
| <b>Enclosure</b>                            |                             |
| Number of command points                    | 1                           |
| <b>Actuator</b>                             |                             |
| Design of the operating mechanism           | pushbutton with flat button |
| Manner of function of the actuating element | Latching                    |
| Product extension optional Light source     | No                          |
| Color                                       |                             |
| • of the actuating element                  | Red                         |
| Material of the actuating element           | plastic                     |
| Shape of the actuating element              | round                       |
| Outer diameter of the actuating element     | 29.5 mm                     |
| Type of unlocking device                    | push-to-unlatch mechanism   |
| <b>Front ring</b>                           |                             |
| Product component front ring                | Yes                         |

|                                   |          |
|-----------------------------------|----------|
| <b>Design of the front ring</b>   | Standard |
| <b>Material of the front ring</b> | plastic  |
| <b>Color of the front ring</b>    | black    |

### General technical data

|  |  |
|--|--|
| <b>Protection class IP</b>   | IP66, IP67, IP69(IP69K)                  |
| <b>Degree of protection NEMA rating</b>  | NEMA 1, 2, 3, 3R, 4, 4X, 12              |
| <b>Vibration resistance</b>  |  |
| <ul style="list-style-type: none"> <li>• acc. to IEC 60068-2-6</li> <li>• for railway applications acc. to DIN EN 61373</li> </ul> | 10 ... 500 Hz: 5g<br>Category 1, Class B |
| <b>Operating frequency maximum</b>   | 1 800 1/h                                |
| <b>Mechanical service life (switching cycles)</b>  |  |
| <ul style="list-style-type: none"> <li>• typical</li> </ul>  | 500 000                                  |
| <b>Equipment marking</b>   |  |
| <ul style="list-style-type: none"> <li>• acc. to DIN EN 61346-2</li> <li>• acc. to DIN EN 81346-2</li> </ul>                       | S<br>S                                   |




### Ambient conditions

|  |   |
|--|---|
| <b>Ambient temperature</b>   |   |
| <ul style="list-style-type: none"> <li>• during operation</li> <li>• during storage</li> </ul> | -25 ... +70 °C<br>-40 ... +80 °C                                    |
| Environmental category during operation acc. to IEC 60721                                      | 3M6, 3S2, 3B2, 3C3, 3K6 (with relative air humidity of 10 ... 95 %) |

### Installation/ mounting/ dimensions

|  |         |
|--|---------|
| <b>Height</b>                                      | 29.5 mm |
| <b>Width</b>                                       | 29.5 mm |
| <b>Shape of the installation opening</b>           | round   |
| <b>Mounting diameter</b>                           | 22.3 mm |
| <b>Positive tolerance of installation diameter</b> | 0.4 mm  |
| <b>Mounting height</b>                             | 11 mm   |
| <b>Installation width</b>                          | 29.5 mm |
| <b>Installation depth</b>                          | 24.3 mm |

### Certificates/approvals

| General Product Approval  | Declaration of Conformity   | Test Certificates   |
|---|---|---|
|  CSA<br> UL |  EAC<br> CE<br>EG-Konf. | <a href="#">Werksbescheinigung</a><br><a href="#">gen</a><br><a href="#">spezielle Prüfbescheinigungen</a><br><a href="#">n</a> |

| other                         |
|-------------------------------|
| <a href="#">Bestätigungen</a> |

### Further information

**Information- and Downloadcenter (Catalogs, Brochures,...)**

<http://www.siemens.com/industrial-controls/catalogs>

**Industry Mall (Online ordering system)**

<https://mall.industry.siemens.com/mall/en/en/Catalog/product?mlfb=3SU1000-0AA20-0AA0>

**Cax online generator**

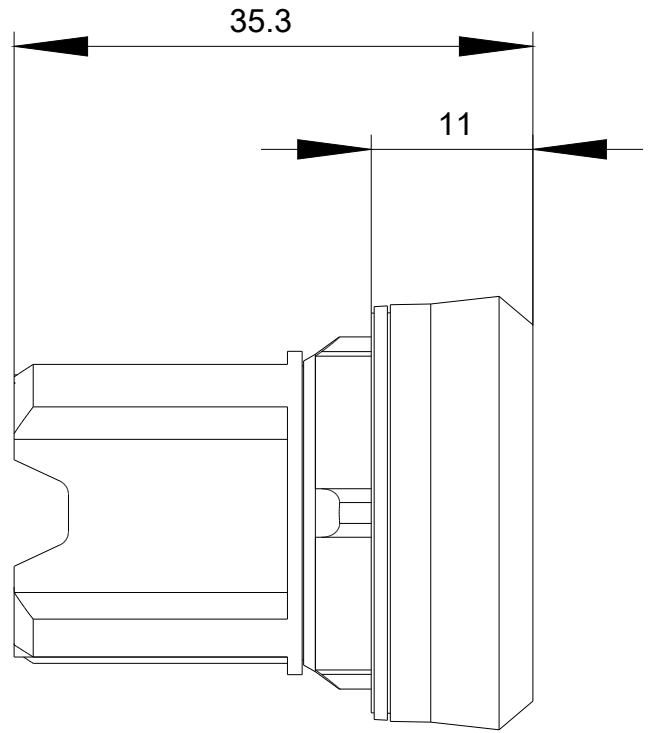
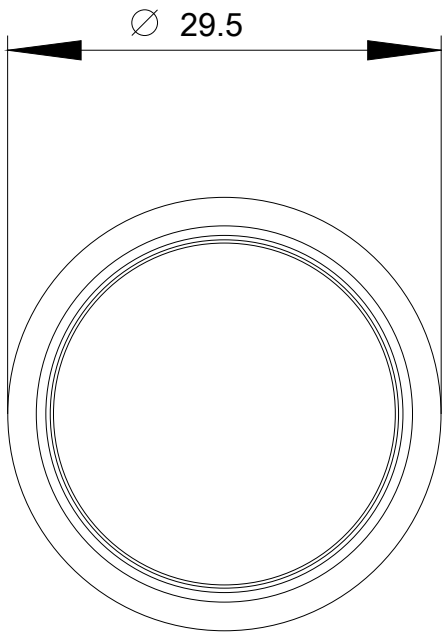
<http://support.automation.siemens.com/WW/CAXorder/default.aspx?lang=en&mlfb=3SU1000-0AA20-0AA0>

**Service&Support (Manuals, Certificates, Characteristics, FAQs,...)**

<https://support.industry.siemens.com/cs/ww/en/ps/3SU1000-0AA20-0AA0>

**Image database (product images, 2D dimension drawings, 3D models, device circuit diagrams, EPLAN macros, ...)**

[http://www.automation.siemens.com/bilddb/cax\\_de.aspx?mlfb=3SU1000-0AA20-0AA0&lang=en](http://www.automation.siemens.com/bilddb/cax_de.aspx?mlfb=3SU1000-0AA20-0AA0&lang=en)



last modified:

04/24/2017