




REAR CONNECTING STUDS ROUND 3 PCS. ACCESSORY FOR:
3VA2 400/630



| Model | |
|---------------------|-------------|
| product brandname | SETRON |
| Product designation | accessories |

| Certificates | | | | |
|---|--|---|--|-------------------------|
| General Product Approval | EMC | Declaration of Conformity | Test Certificates | other |
|  |  RCM |  EG-Konf. | Typrüfbescheinigung/Werkszeugnis | sonstig |

| Further information |
|--|
| Information- and Downloadcenter (Catalogs, Brochures,...) http://www.siemens.com/lowvoltage/catalogs |
| Industry Mall (Online ordering system) https://mall.industry.siemens.com/mall/en/en/Catalog/product?mlfb=3VA9403-0QF00 |
| Service&Support (Manuals, Certificates, Characteristics, FAQs,...) http://support.automation.siemens.com/WW/view/en/3VA9403-0QF00/all |

Image database (product images, 2D dimension drawings, 3D models, device circuit diagrams, ...)

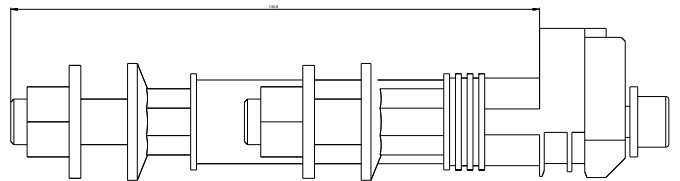
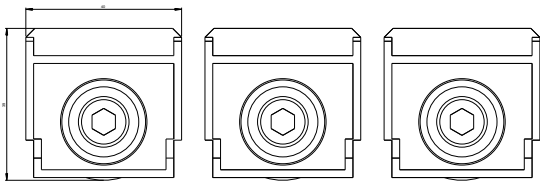
http://www.automation.siemens.com/bilddb/cax_en.aspx?mlfb=3VA9403-0QF00

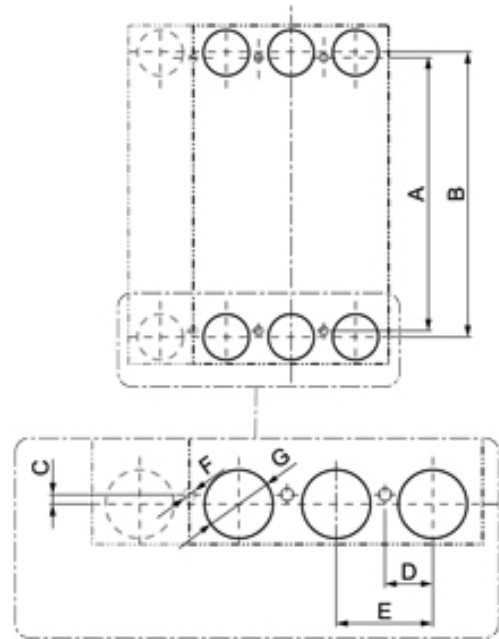
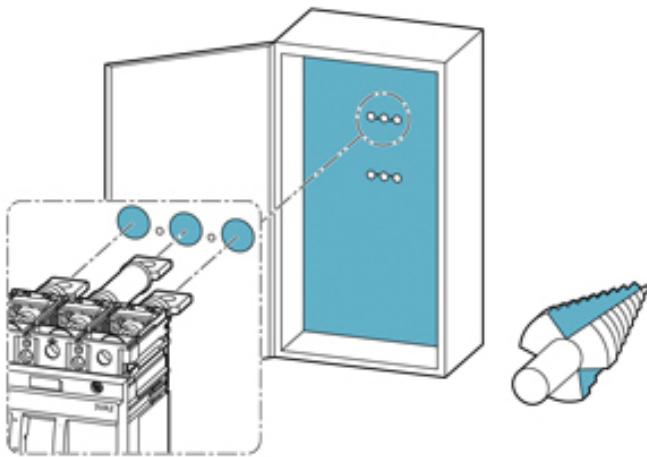
CAX-Online-Generator

<http://www.siemens.com/cax>

Tender specifications

<http://www.siemens.com/specifications>





| | 3VA1 | | 3VA2 | |
|---|-----------|----------|-----------------|-----------|
| | 100 / 160 | 250 | 100 / 160 / 250 | 400 / 600 |
| A | 114.5 mm | 123.5 mm | 146 mm | 180 mm |
| B | 121 mm | 134 mm | 157 mm | 200 mm |
| C | 3.5 mm | 5.25 mm | 5.5 mm | 10 mm |
| D | 12.7 mm | 17.5 mm | 17.5 mm | 23 mm |
| E | 25.4 mm | 35 mm | 35 mm | 46 mm |
| F | 4 mm | 4.5 mm | 4.5 mm | 5.5 mm |
| G | 17 mm | 24.5 mm | 24.5 mm | 34 mm |

last modified:

02/09/2017