

BACKING PLATE FOR EM. STOP MUSH. PUSHBUTTON IN ENCLOSURE, YELLOW, WITHOUT INSCRIPTION, SELF-ADHESIVE

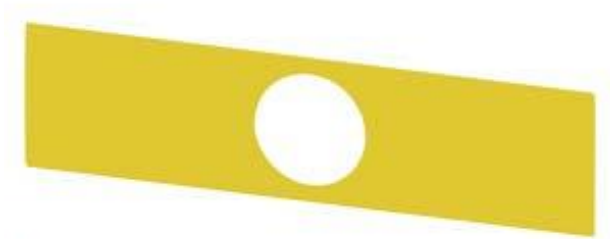






Figure similar

product brandname	SIRIUS ACT
General technical data	
Protection class IP	IP66, IP67, IP69(IP69K)
Shock resistance	Category 1, Class B
<ul style="list-style-type: none"> • for railway applications acc. to DIN EN 61373 	
Vibration resistance	Category 1, Class B
<ul style="list-style-type: none"> • for railway applications acc. to DIN EN 61373 	
Installation/ mounting/ dimensions	
Height	38 mm
Width	150 mm
Accessories	
Material of accessory	Plastic
Mounting type of label	stick
Marking of the name plate for command devices	none
Shape of the name plate for command devices	rectangular
Color of the label	yellow/black (plate/text)

Certificates/approvals

General Product Approval		Declaration of Conformity	Test Certificates		
 CSA	 UL		 EG-Konf.	Werksbescheinigung gen	spezielle Prüfbescheinigung n

other

[Bestätigungen](#)

Further information

Information- and Downloadcenter (Catalogs, Brochures,...)

<http://www.siemens.com/industrial-controls/catalogs>

Industry Mall (Online ordering system)

<https://mall.industry.siemens.com/mall/en/en/Catalog/product?mlfb=3SU1900-0BE31-0AA0>

Cax online generator

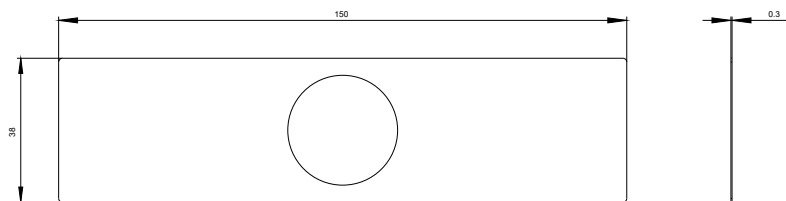
<http://support.automation.siemens.com/WW/CAXorder/default.aspx?lang=en&mlfb=3SU1900-0BE31-0AA0>

Service&Support (Manuals, Certificates, Characteristics, FAQs,...)

<https://support.industry.siemens.com/cs/ww/en/ps/3SU1900-0BE31-0AA0>

Image database (product images, 2D dimension drawings, 3D models, device circuit diagrams, EPLAN macros, ...)

http://www.automation.siemens.com/bilddb/cax_de.aspx?mlfb=3SU1900-0BE31-0AA0&lang=en



last modified:

01/17/2017