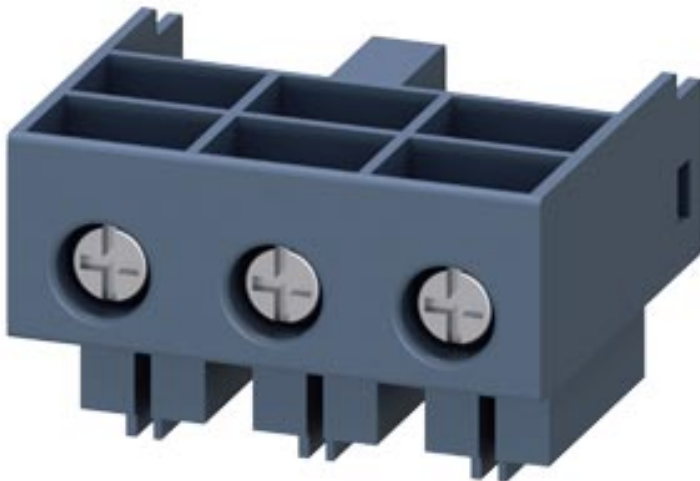


MAIN CIRCUIT TERMINALS (INTEGRATION AND CONNECTION OF MAIN CIRCUIT: SCREW TERMINAL, 2 MAIN CIRCUIT TERMINAL P. PACK









General technical data:		
product brand name		SIRIUS
Product designation		main circuit terminals (ingoing as well as outgoing)
Protection class IP		IP20
Relative humidity during operation	%	10 ... 90
Ambient temperature		
• during transport	°C	-55 ... +80
• during storage	°C	-55 ... +80
• during operation	°C	-20 ... +60
Equipment marking acc. to DIN EN 61346-2		X
Equipment marking acc. to DIN 40719 extended according to IEC 204-2 acc. to IEC 750		X

Installation/ mounting/ dimensions:		
Width	mm	45
Height	mm	32
Depth	mm	30

Connections/ Terminals:		
Wire stripping length	mm	10

<b>Type of electrical connection</b>		screw-type terminals
<ul style="list-style-type: none"> <li>• for main current circuit</li> <li>• for auxiliary and control current circuit</li> </ul>		screw-type terminals
<b>Type of connectable conductor cross-sections</b>		
<ul style="list-style-type: none"> <li>• for main contacts <ul style="list-style-type: none"> <li>— solid</li> <li>— finely stranded with core end processing</li> </ul> </li> <li>• at AWG conductors for main contacts</li> </ul>		up to 12 A: 2x (1.5 ... 2.5 mm <sup>2</sup> ), 2x (2.5 ... 6 mm <sup>2</sup> ), up to 32 A: 2x (2.5 ... 6 mm <sup>2</sup> ) up to 12 A: 2x (1.5 ... 2.5 mm <sup>2</sup> ), 2x (2.5 ... 6 mm <sup>2</sup> ) up to 32 A: 2x (2.5 ... 6 mm <sup>2</sup> ) up to 12 A: 2x (16 ... 14), 2x (14 ... 10), 1x 8, up to 32 A: 2x (14 ... 10), 1x 8
Design of screw-type connection for auxiliary contacts		M6
Tightening torque for auxiliary contacts with screw-type terminals	N·m	2 ... 2.5

#### Certificates/ approvals:

<b>Certificate of suitability</b>	IEC / EN 60947-6-2				
<b>General Product Approval</b>	<b>EMC</b>	<b>Declaration of Conformity</b>	<b>Shipping Approval</b>		
 CSA	 UL		 C-Tick	 EG-Konf.	 BUREAU VERITAS

<b>Shipping Approval</b>	<b>other</b>
 DNV  LRS  PRS  RINA  RMRS	<a href="#">Umweltbestätigung</a>

<b>other</b>
<a href="#">Bestätigungen</a>

#### Further information

**Information- and Downloadcenter (Catalogs, Brochures,...)**

<http://www.siemens.com/industrial-controls/catalogs>

**Industry Mall (Online ordering system)**

<http://www.siemens.com/industrymall>

**Cax online generator**

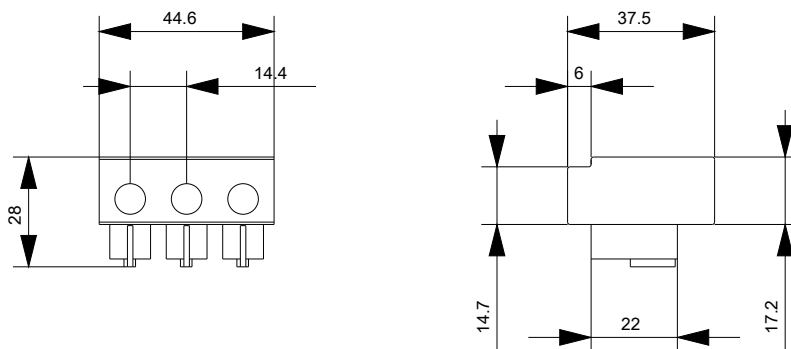
<http://support.automation.siemens.com/WW/CAXorder/default.aspx?lang=en&mlfb=3RA6920-1A>

Service&Support (Manuals, Certificates, Characteristics, FAQs,...)

<https://support.industry.siemens.com/cs/ww/en/ps/3RA6920-1A>

Image database (product images, 2D dimension drawings, 3D models, device circuit diagrams, EPLAN macros, ...)

[http://www.automation.siemens.com/bilddb/cax\\_de.aspx?mlfb=3RA6920-1A&lang=en](http://www.automation.siemens.com/bilddb/cax_de.aspx?mlfb=3RA6920-1A&lang=en)



last modified:

12/09/2016