

UNDERVOLTAGE RELEASE, AC 230V/50HZ, AC 240V/60HZ, WITH LEADING AUX. CONTACTS 2NO, W. SCREW CONNECTION, FOR CIRCUIT-BREAKERS 3RV2



General technical data:

product brand name		SIRIUS
Product designation		undervoltage release
Size of the circuit-breaker		S00, S0, S2
Design of the product		with 2 auxiliary contacts
Suitability for use		motor circuit breaker
Protection class IP on the front		IP20
Design of short-circuit protection		fuse
Degree of pollution		3
Insulation voltage rated value	V	690
Insulation voltage with degree of pollution 3 rated value	V	690
Ambient temperature		
• during storage	°C	-50 ... +80
• during operation	°C	-20 ... +60
Equipment marking acc. to DIN 40719 extended according to IEC 204-2 acc. to IEC 750		F
Equipment marking acc. to DIN EN 61346-2		F

Auxiliary circuit:

Number of NC contacts for auxiliary contacts instantaneous contact		0
Number of NO contacts for auxiliary contacts instantaneous contact		0
Number of NO contacts for auxiliary contacts leading contact		2
Number of CO contacts of auxiliary contacts instantaneous contact		0

Control circuit/ Control:

Type of voltage of the control supply voltage		AC
Control supply voltage frequency		
<ul style="list-style-type: none"> • 1 <ul style="list-style-type: none"> — rated value — Initial rated value — Final rated value • 2 rated value 	 	
Control supply voltage		
<ul style="list-style-type: none"> • 1 <ul style="list-style-type: none"> — at DC <ul style="list-style-type: none"> — rated value — Initial rated value — Final rated value — at AC <ul style="list-style-type: none"> — at 50 Hz rated value — at 50 Hz Initial rated value — at 50 Hz Final rated value — at 60 Hz rated value — at 60 Hz Final rated value — at 60 Hz Initial rated value • 2 <ul style="list-style-type: none"> — at DC rated value — at AC <ul style="list-style-type: none"> — at 50 Hz rated value — at 60 Hz rated value 	 	

Installation/ mounting/ dimensions:

Mounting type		snap-on mounting
Width	mm	18.5
Height	mm	90
Depth	mm	68
Required spacing with side-by-side mounting		
<ul style="list-style-type: none"> • forwards • Backwards 		

<ul style="list-style-type: none"> • upwards • downwards • at the side 	<kein Wert>
<ul style="list-style-type: none"> • forwards • Backwards • upwards • at the side • downwards 	<kein Wert>
<ul style="list-style-type: none"> • forwards • Backwards • upwards • downwards • at the side 	<kein Wert>

Certificates/ approvals:

Certificate of suitability CE / UL / CSA

General Product Approval	Declaration of Conformity	Test Certificates	Shipping Approval
--------------------------	---------------------------	-------------------	-------------------



CSA



UL



EG-Konf.

[spezielle Prüfbescheinigung](#)
[n](#)

[Typprüfbescheinigung/Werkszeugnis](#)



ABS

Shipping Approval	other
-------------------	-------



BUREAU VERITAS



LRS



PRS



RINA



RMRS

[Umweltbestätigung](#)

other	Railway
-------	---------

[Bestätigungen](#)



VDE

[Schwingen/Schocke](#)

[n](#)

Further information

Information- and Downloadcenter (Catalogs, Brochures,...)

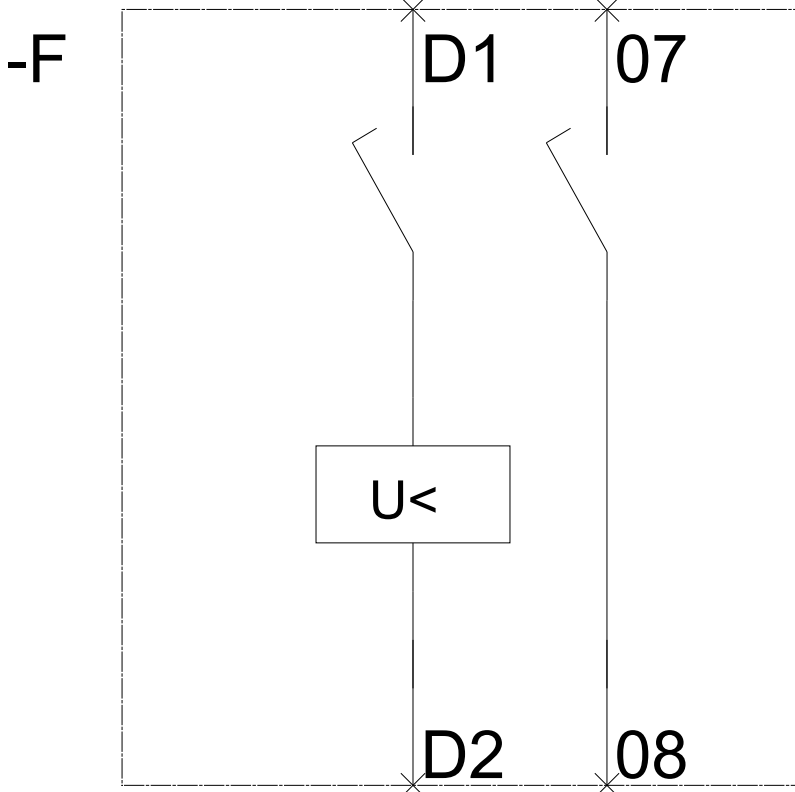
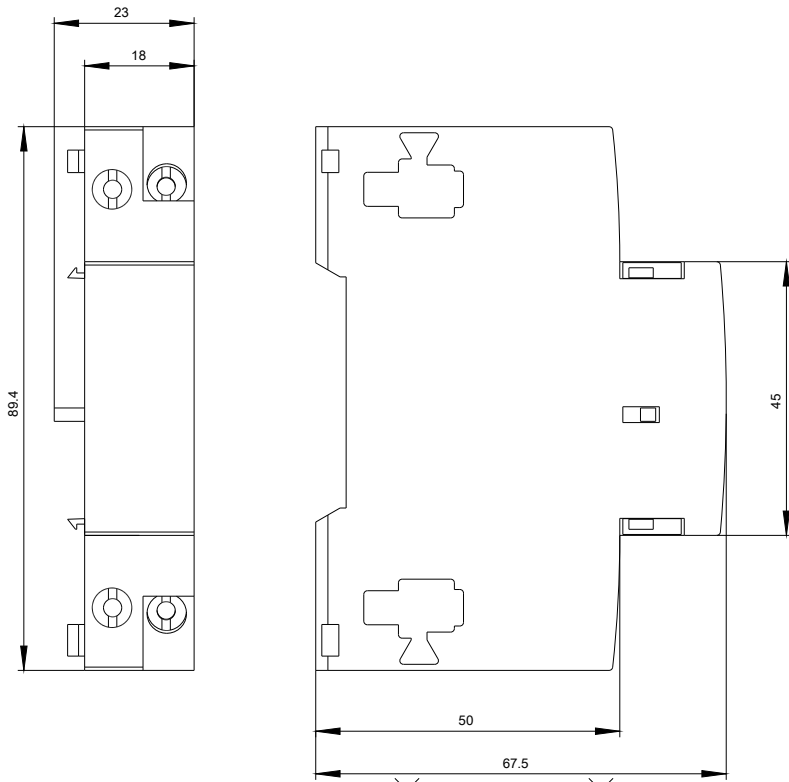
<http://www.siemens.com/industrial-controls/catalogs>

Industry Mall (Online ordering system)

<http://www.siemens.com/industrymall>

Cax online generator

<http://support.automation.siemens.com/WW/CAXorder/default.aspx?lang=en&mlfb=3RV2922-1CP0>



last modified:

07/08/2016