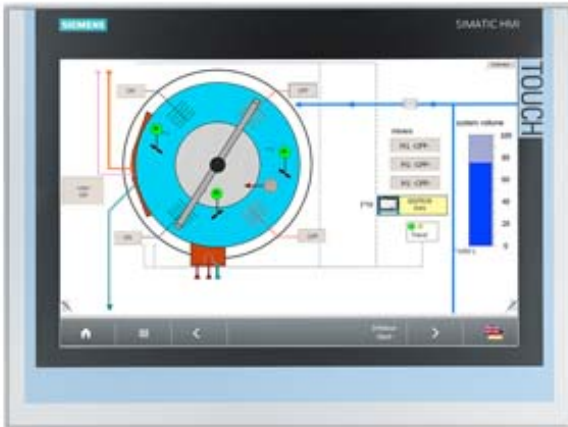


SIMATIC IFP1500 FLAT PANEL 15" DISPLAY (16:10), TOUCH, STANDARD VERSION MAX. 5M, 1280X800 PIXEL, FOR 24V DC, DISPLAYPORT / DVI INTERFACE INCL. DVI/USB-CABLE 1,8 M



General information

Product type designation	IFP1500
Short designation	Flat Panel 15" Touch

Display

Design of display	TFT widescreen display, LED backlighting
Screen diagonal	15.4 in
Screen diagonal (cm)	40 cm
Display width	331.2 mm
Display height	207 mm
Viewing angle	170° x 170°
On Screen Display (OSD) configuration	No; Adjustable by means of software
Number of colors	16 777 216
Number of colors (bit levels)	24 bit
Resolution (pixels)	
<ul style="list-style-type: none"> • Resolution (WxH in pixel) • Horizontal image resolution • Vertical image resolution • Pixel size, horizontal 	<p>1280 x 800</p> <p>1 280 Pixel</p> <p>800 Pixel</p> <p>0.259 mm</p>

• Pixel size, vertical	0.259 mm
General features	
• Detachable from computer unit	5 m
• Brightness/contrast	400 cd/m ² / 1000:1
• Luminance	400 cd/m ²
Backlighting	
• Type of backlighting	LED
• MTBF backlighting (up to 50%, at 25 °C)	50 000 h; At 25°C
• Backlight dimmable	Yes; 0-100 %
Control elements	
Keyboard fonts	
• Function keys	No
Touch operation	
• Monitor keyboard	Yes
Installation type/mounting	
Built-in unit	Yes; Portrait mode possible
• permissible angle to the vertical backward (console)	35°
• permissible angle to the vertical forward (ceiling mounting)	35°
Supply voltage	
Type of supply voltage	DC
Rated value (DC)	24 V
permissible range, lower limit (DC)	19.2 V
permissible range, upper limit (DC)	28.8 V
Power loss	
Power loss DC	
• Typical	40 W
• Maximum	65 W
Interfaces	
Video interfaces	
• DVI-D	Yes
• DisplayPort	Yes; DisplayPort V1.1
Touch interfaces	
• USB	Yes
Degree and class of protection	
IP65 at front	Yes
Enclosure Type 4 at the front	Yes
NEMA4 at the front	No
NEMA4X at the front	No

IP20 rear	Yes
Standards, approvals, certificates	
CE mark	Yes
cULus	Yes; Corresponds to UL 508
RCM (formerly C-TICK)	Yes
KC approval	Yes
Use in hazardous areas	
• FM Class I Division 2	Yes
Ambient conditions	
Ambient temperature during operation	
• min.	0 °C
• max.	50 °C; Vertical installation (horizontal)
Ambient temperature during storage/transportation	
• min.	-20 °C
• max.	60 °C
Relative humidity	
• Operation, max.	95 %; Non-condensing
Vibrations	
• Vibration load in operation	1 gn
• Vibration load during transport/storage	1 gn
Shock testing	
• Shock load during operation	15 gn
• Shock load during transport/storage	15 gn
Mechanics/material	
Type of housing (front)	aluminum
Enclosure material (front)	
• Aluminum	Yes
Dimensions	
Width of the housing front	415 mm
Height of housing front	310 mm
Mounting cutout, width	396 mm; Tolerance: +1 mm
Mounting cutout, height	291 mm; Tolerance: +1 mm
Overall depth	62.5 mm
Weights	
Weight without packaging	3.9 kg
Weight incl. packaging	5 kg
last modified:	22.06.2016