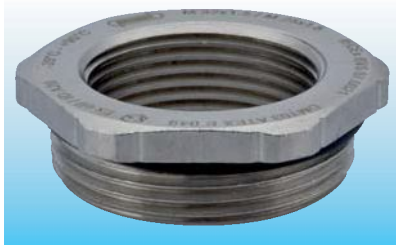


## Ex Příslušenství

### RSD-MS-Ex

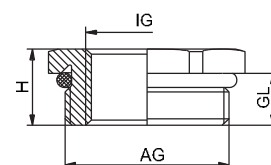
Metr.



<b>Materiál</b>	poniklovaná mosaz
<b>O-kroužek</b>	NBR / VMQ
<b>Krytí</b>	IP 68 – 10 bar / IP 69K
<b>Pracovní teplota</b>	-20 °C – 95 °C (NBR) -60 °C – 180 °C (VMQ)



II 2G 1D

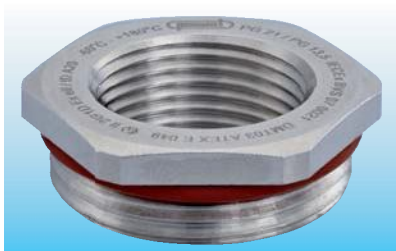


Mezinárodní certifikáty najdete na str. 176 nebo na internetu: [www.hummel.com](http://www.hummel.com)

AG	IG	GL	H	Obj. č NBR -20 °C – 95 °C	Obj. č VMQ -60 °C – 180 °C	AG	IG	GL	H	Obj. č NBR -20 °C – 95 °C	Obj. č VMQ -60 °C – 180 °C
M 16 x 1,5	M 12 x 1,5	5	17	1.078.1612.50	1.079.1612.50	M 50 x 1,5	M 32 x 1,5	9	55	1.078.5032.50	1.079.5032.50
M 20 x 1,5	M 12 x 1,5	6	22	1.078.2012.50	1.079.2012.50	M 50 x 1,5	M 40 x 1,5	9	55	1.078.5040.50	1.079.5040.50
M 20 x 1,5	M 16 x 1,5	6	22	1.078.2016.50	1.079.2016.50	M 63 x 1,5	M 32 x 1,5	10	65	1.078.6332.50	1.079.6332.50
M 25 x 1,5	M 16 x 1,5	7	29	1.078.2516.50	1.079.2516.50	M 63 x 1,5	M 40 x 1,5	10	65	1.078.6340.50	1.079.6340.50
M 25 x 1,5	M 20 x 1,5	7	29	1.078.2520.50	1.079.2520.50	M 63 x 1,5	M 50 x 1,5	10	65	1.078.6350.50	1.079.6350.50
M 32 x 1,5	M 16 x 1,5	8	34	1.078.3216.50	1.079.3216.50						
M 32 x 1,5	M 20 x 1,5	8	34	1.078.3220.50	1.079.3220.50						
M 32 x 1,5	M 25 x 1,5	8	34	1.078.3225.50	1.079.3225.50						
M 40 x 1,5	M 20 x 1,5	8	43	1.078.4020.50	1.079.4020.50						
M 40 x 1,5	M 25 x 1,5	8	43	1.078.4025.50	1.079.4025.50						
M 40 x 1,5	M 32 x 1,5	8	43	1.078.4032.50	1.079.4032.50						
M 50 x 1,5	M 25 x 1,5	9	55	1.078.5025.50	1.079.5025.50						

### RSD-MS-Ex

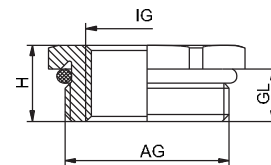
PG



<b>Materiál</b>	poniklovaná mosaz
<b>O-kroužek</b>	NBR / VMQ
<b>Krytí</b>	IP 68 – 10 bar / IP 69K
<b>Pracovní teplota</b>	-20 °C – 95 °C (NBR) -60 °C – 180 °C (VMQ)



II 2G 1D



Mezinárodní certifikáty najdete na str. 176 nebo na internetu: [www.hummel.com](http://www.hummel.com)

AG	IG	GL	H	H	Obj. č NBR -20 °C – 95 °C	Obj. č VMQ -60 °C – 180 °C	AG	IG	GL	H	H	Obj. č NBR -20 °C – 95 °C	Obj. č VMQ -60 °C – 180 °C
PG 9	PG 7	6	8,8	17	1.078.0907.01	1.079.0907.01	PG 36	PG 21	9	12,5	50	1.078.3621.01	1.079.3621.01
PG 11	PG 7	6	9	20	1.078.1107.01	1.079.1107.01	PG 36	PG 29	9	12,5	50	1.078.3629.01	1.079.3629.01
PG 11	PG 9	6	9	20	1.078.1109.01	1.079.1109.01	PG 42	PG 29	10	13,5	57	1.078.4229.01	1.079.4229.01
PG 13,5	PG 9	6,5	9,5	22	1.078.1309.01	1.079.1309.01	PG 42	PG 36	10	13,5	57	1.078.4236.01	1.079.4236.01
PG 16	PG 9	6,5	9,5	24	1.078.1609.01	1.079.1609.01	PG 48	PG 36	10	13,5	64	1.078.4836.01	1.079.4836.01
PG 16	PG 11	6,5	9,5	24	1.078.1611.01	1.079.1611.01	PG 48	PG 42	10	13,5	64	1.078.4842.01	1.079.4842.01
PG 16	PG 13,5	6,5	9,5	24	1.078.1613.01	1.079.1613.01							
PG 21	PG 11	7	10,3	30	1.078.2111.01	1.079.2111.01							
PG 21	PG 13,5	7	10,3	30	1.078.2113.01	1.079.2113.01							
PG 21	PG 16	7	10,3	30	1.078.2116.01	1.079.2116.01							
PG 29	PG 16	8	11,5	40	1.078.2916.01	1.079.2916.01							
PG 29	PG 21	8	11,5	40	1.078.2921.01	1.079.2921.01							