

RES.CUR.OP.CIRCUIT BREAKER TYPE A 63A 3+N-  
POLE 100MA 400V 4MW



| Model   |    |                              |
|---|----|------------------------------|
| product brand name  |    | SENTRON                      |
| Product designation   |    | RCCB                         |
| Design of the product   |    | Instantaneous                |
| General technical data  |    |                              |
| Number of poles   |    | 4                            |
| Size of installation devices / acc. to DIN 43880                                  |    | 1                            |
| Protection against electrical shock   |    | Finger and back-of-hand safe |
| Short-circuit current rating  | kA | 10                           |
| circuit-breaker / Design  |    | 5SV3                         |
| Mechanical service life (switching cycles) / typical                              |    | 10 000                       |
| Overvoltage category  |    | III                          |
| Supply voltage  |    |                              |
| Supply voltage  |    |                              |
| <ul style="list-style-type: none"> <li>at AC / rated value</li> </ul>             | V  | 400                          |
| <ul style="list-style-type: none"> <li>for testing equipment / minimum</li> </ul> | V  | 100                          |
| Supply voltage frequency  |    |                              |
| <ul style="list-style-type: none"> <li>rated value</li> </ul>                     |    | 50Hz                         |

| Protection class  |                   |   |
|---|-------------------|---|
| <b>Protection class IP</b>  |                   | IP20, if the distribution board is installed, with connected conductors |
| Switching capacity  |                   |   |
| <b>Switching capacity current</b>   |                   |   |
| • acc. to EN 60898 / rated value  | kA                | 0.8   |
| Dissipation   |                   |   |
| <b>Power loss [W]</b>   |                   |   |
| • for rated value of the current / at AC / in hot operating state / per pole      | W                 | 3.9   |
| • maximum   | W                 | 11.7  |
| Electricity   |                   |   |
| <b>Tripping residual current / rated value</b>                                    | mA                | 100   |
| rated current $I_n$ / IEC, DIN/VDE / at 40 Cel                                    | A                 | 63  |
| <b>Type of fault current-protection device</b>                                    |                   | A   |
| Current / at AC / rated value   | A                 | 63  |
| <b>I<sup>2</sup>t-value / permissible</b>   | A <sup>2</sup> ·s | 44 880  |
| Surge current resistance / rated value  | kA                | 1   |
| <b>Operating frequency</b>  |                   | 50/60Hz   |
| Product details   |                   |   |
| <b>Product feature</b>  |                   |   |
| • halogen-free  |                   | Yes   |
| • silicon-free  |                   | Yes   |
| Product extension / can be installed / supplementary devices                      |                   | Yes   |
| Number  |                   |   |
| <b>Number of test cycles / for environmental testing / acc. to IEC 60068-2-30</b> |                   | 28  |
| Connections   |                   |   |
| <b>Connectable conductor cross-section / stranded</b>                             |                   |   |
| • minimum   | mm <sup>2</sup>   | 0.75  |
| • maximum   | mm <sup>2</sup>   | 35  |
| <b>Connectable conductor cross-section / solid</b>                                |                   |   |
| • minimum   | mm <sup>2</sup>   | 0.75  |
| • maximum   | mm <sup>2</sup>   | 35  |
| <b>Tightening torque / with screw-type terminals</b>                              |                   |   |
| • minimum   | N·m               | 2.5   |
| • maximum   | N·m               | 3   |
| Position / of power supply cord   |                   | top or bottom   |
| Mechanical Design   |                   |   |

|                       |    |                |
|-----------------------|----|----------------|
| Height                | mm | 90             |
| Width                 | mm | 72             |
| Depth                 | mm | 70             |
| Mounting position     |    | any            |
| Installation depth    | mm | 70             |
| Number of width units |    | 4              |
| Mounting type         |    | DIN rail (REG) |
| Net weight            | g  | 372            |

#### Environmental conditions

##### Ambient temperature

|  |    |     |
|--|----|-----|
| • minimum                              | °C | -25 |
| • maximum                              | °C | 45  |
| • during storage / minimum permissible | °C | -40 |
| • during storage / maximum permissible | °C | 75  |

#### Certificates

##### Equipment marking

|                          |   |
|--------------------------|---|
| • acc. to DIN EN 61346-2 | F |
| • acc. to DIN EN 81346-2 | F |

#### General Product Approval



#### General Product Approval

[sonstig](#)

#### Further information

##### Information- and Downloadcenter (Catalogs, Brochures,...)

<http://www.siemens.com/lowvoltage/catalogs>

##### Industry Mall (Online ordering system)

<https://eb.automation.siemens.com/mall/en/WW/Catalog/Product/5SV34466>

##### Service&Support (Manuals, Certificates, Characteristics, FAQs,...)

<http://support.automation.siemens.com/WW/view/en/5SV34466/all>

##### Image database (product images, 2D dimension drawings, 3D models, device circuit diagrams, ...)

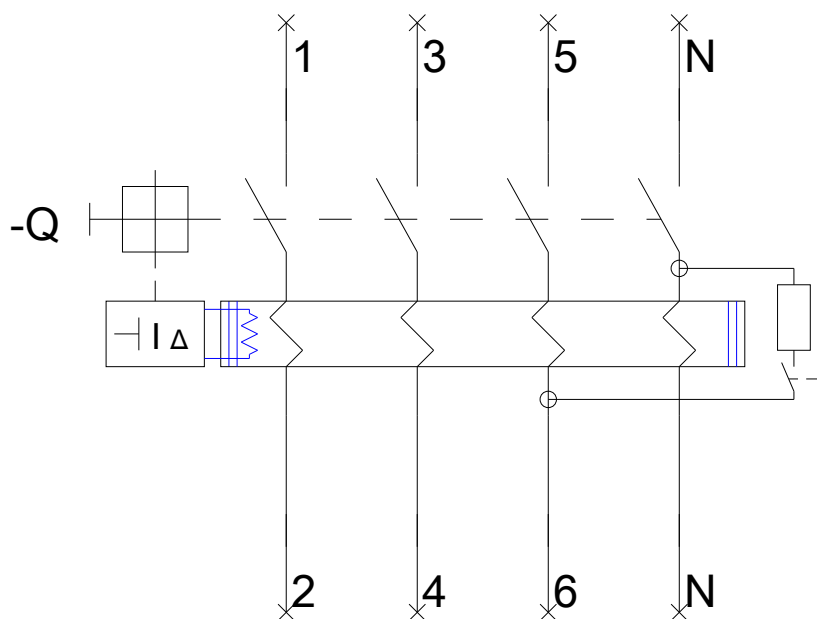
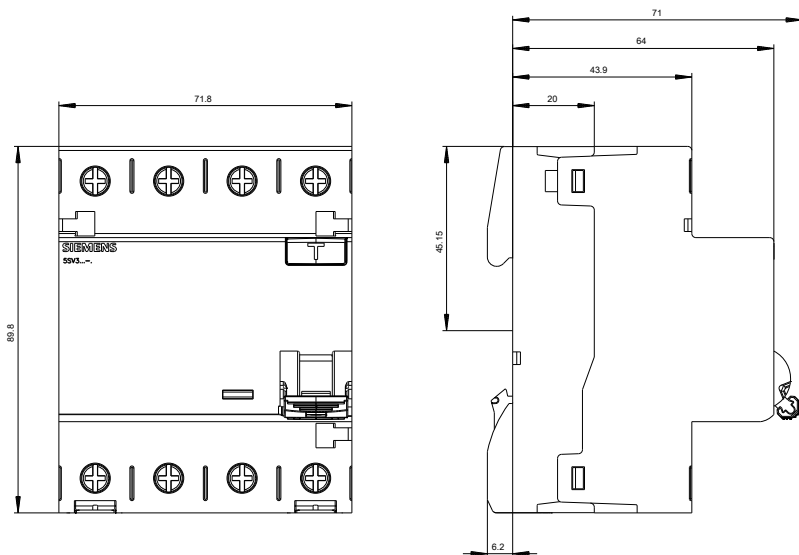
[http://www.automation.siemens.com/bilddb/cax\\_en.aspx?mlfb=5SV34466](http://www.automation.siemens.com/bilddb/cax_en.aspx?mlfb=5SV34466)

##### CAX-Online-Generator

<http://www.siemens.com/cax>

##### Tender specifications

<http://ausschreibungstexte.siemens.com/tiplv>



last modified:

09.04.2016