

SURGE SUPPRESSOR, DIODE COMBINATION 24V DC, FOR CONTACTORS SIZE S2






Figure similar

General technical data:		
product brand name		SIRIUS
Product designation		surge suppressor
Size of contactor		S2
Design of the surge suppressor		Diode combination
Ambient temperature		
• during storage	°C	-40 ... +80
• during operation	°C	-25 ... +60
Control circuit/ Control:		
Type of voltage of the control supply voltage		DC
Control supply voltage frequency		
• 1 Rated value	Hz	50
• 2 Rated value	Hz	60
Control supply voltage 1		
• at DC		
— Rated value	V	24
Installation/ mounting/ dimensions:		
mounting position		any

Mounting type		clip-on
Width	mm	30
Height	mm	30
Depth	mm	14.5

#### Certificates/ approvals:

Certificate of suitability		CE / UL / CSA / CCC		
General Product Approval	Declaration of Conformity	Test Certificates	other	
	 UL	 EG-Konf.	<a href="#">Typprüfbescheinigung/Werkszeugnis</a>	<a href="#">Umweltbestätigung</a> <a href="#">Bestätigungen</a>

#### Railway

[Bestätigungen](#)

#### Further information

**Information- and Downloadcenter (Catalogs, Brochures,...)**

<http://www.siemens.com/industrial-controls/catalogs>

**Industry Mall (Online ordering system)**

<http://www.siemens.com/industrymall>

**Cax online generator**

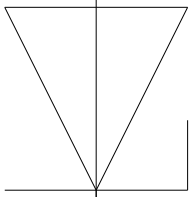
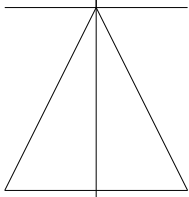
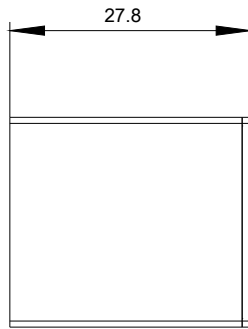
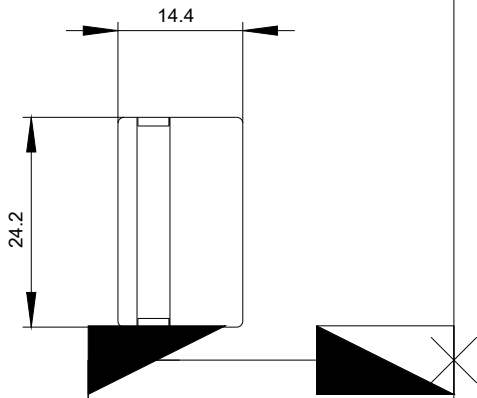
<http://support.automation.siemens.com/WW/CAXorder/default.aspx?lang=en&mlfb=3RT29361ER00>

**Service&Support (Manuals, Certificates, Characteristics, FAQs,...)**

<https://support.industry.siemens.com/cs/ww/en/ps/3RT29361ER00>

**Image database (product images, 2D dimension drawings, 3D models, device circuit diagrams, EPLAN macros, ...)**

[http://www.automation.siemens.com/bilddb/cax\\_de.aspx?mlfb=3RT29361ER00&lang=en](http://www.automation.siemens.com/bilddb/cax_de.aspx?mlfb=3RT29361ER00&lang=en)



last modified:

30.11.2015