

REV. COMB. AC3, 3KW/400V DC24V 3-POLE, SZ S00 SPRING-LOADED TERMINAL ELECTR. AND MECH. INTERLOCK



product brand name	SIRIUS
Product designation	reversing contactor assembly 3RA23
Manufacturer article number	<ul style="list-style-type: none"> • 1 of the supplied contactor 3RT2015-2BB42 • 2 of the supplied contactor 3RT2015-2BB42 • of the supplied RH assembly kit 3RA2913-2AA2

General technical data:	
Size of contactor	S00
Product expansion	Yes
<ul style="list-style-type: none"> • Auxiliary switch 	
Insulation voltage	690 V
<ul style="list-style-type: none"> • with degree of pollution 3 Rated value 	
Surge voltage resistance Rated value	6 kV
Protection class IP	IP20
<ul style="list-style-type: none"> • on the front 	
Degree of pollution	3
Shock resistance	9.8g / 5 ms and 5.9g / 10 ms
<ul style="list-style-type: none"> • at rectangular impulse — at AC 	6,7g / 5 ms, 4,2g / 10 ms

<ul style="list-style-type: none"> — at DC • with sine pulse — at AC — at DC 	<p>6,7g / 5 ms, 4,2g / 10 ms</p> <p>10,5g / 5 ms, 6,6g / 10 ms</p> <p>10,5g / 5 ms, 6,6g / 10 ms</p>
Mechanical service life (switching cycles) <ul style="list-style-type: none"> • of the contactor typical • of the contactor with added auxiliary switch block typical 	<p>10 000 000</p> <p>10 000 000</p>
Equipment marking <ul style="list-style-type: none"> • acc. to DIN EN 81346-2 	<p>Q</p>

Ambient conditions:	
Installation altitude at height above sea level maximum	<p>2 000 m</p>
Ambient temperature <ul style="list-style-type: none"> • during operation • during storage 	<p>-25 ... +60 °C</p> <p>-55 ... +80 °C</p>

Main circuit:	
Number of poles for main current circuit	<p>3</p>
Number of NO contacts for main contacts	<p>3</p>
Number of NC contacts for main contacts	<p>0</p>
Operating voltage <ul style="list-style-type: none"> • at AC-3 Rated value maximum 	<p>690 V</p>
Operating current <ul style="list-style-type: none"> • at AC-1 at 400 V <ul style="list-style-type: none"> — at ambient temperature 40 °C Rated value — at ambient temperature 60 °C Rated value • at AC-2 at 400 V Rated value • at AC-3 <ul style="list-style-type: none"> — at 400 V Rated value 	<p>18 A</p> <p>16 A</p> <p>7 A</p> <p>7 A</p>
Operating current <ul style="list-style-type: none"> • at 1 current path at DC-1 <ul style="list-style-type: none"> — at 24 V Rated value — at 110 V Rated value • with 2 current paths in series at DC-1 <ul style="list-style-type: none"> — at 24 V Rated value — at 110 V Rated value • with 3 current paths in series at DC-1 <ul style="list-style-type: none"> — at 24 V Rated value — at 110 V Rated value 	<p>15 A</p> <p>1.5 A</p> <p>15 A</p> <p>8.4 A</p> <p>15 A</p> <p>15 A</p>
Operating current <ul style="list-style-type: none"> • at 1 current path at DC-3 at DC-5 	

— at 24 V Rated value	15 A
— at 110 V Rated value	0.1 A
• with 2 current paths in series at DC-3 at DC-5	
— at 110 V Rated value	0.25 A
— at 24 V Rated value	15 A
• with 3 current paths in series at DC-3 at DC-5	
— at 110 V Rated value	15 A
— at 24 V Rated value	15 A
No-load switching frequency	1 500 1/h
Operating frequency	
• at AC-1 maximum	1 000 1/h
• at AC-2 maximum	750 1/h
• at AC-3 maximum	750 1/h
• at AC-4 maximum	250 1/h

Control circuit/ Control:

Type of voltage of the control supply voltage	DC
Control supply voltage 1	
• at DC Rated value	24 V
Operating range factor control supply voltage rated value of the magnet coil at DC	0.85 ... 1.1
Closing power of the magnet coil at DC	4 W
Holding power of the magnet coil at DC	4 W

Auxiliary circuit:

Number of NC contacts	
• for auxiliary contacts	
— per direction of rotation	0
— instantaneous contact	0
— lagging switching	0
Number of NO contacts	
• for auxiliary contacts	
— per direction of rotation	0
— instantaneous contact	0
— leading contact	0
Operating current of the auxiliary contacts at AC-12 maximum	10 A
Operating current of the auxiliary contacts at AC-15	
• at 230 V	6 A
• at 400 V	3 A
Operating current of the auxiliary contacts at DC-13	
• at 24 V	10 A
• at 60 V	2 A

<ul style="list-style-type: none"> • at 110 V • at 220 V 	<p>1 A</p> <p>0.3 A</p>
Contact reliability of the auxiliary contacts	< 1 error per 100 million operating cycles

UL/CSA ratings:

Full-load current (FLA) for three-phase AC motor	
<ul style="list-style-type: none"> • at 480 V Rated value • at 600 V Rated value 	<p>4.8 A</p> <p>6.1 A</p>
yielded mechanical performance [hp]	
<ul style="list-style-type: none"> • for single-phase AC motor <ul style="list-style-type: none"> — at 110/120 V Rated value — at 230 V Rated value • for three-phase AC motor <ul style="list-style-type: none"> — at 200/208 V Rated value — at 220/230 V Rated value — at 460/480 V Rated value — at 575/600 V Rated value 	<p>0.25 hp</p> <p>0.75 hp</p> <p>1.5 hp</p> <p>2 hp</p> <p>3 hp</p> <p>5 hp</p>
Contact rating of the auxiliary contacts acc. to UL	A600 / Q600

Short-circuit protection

Design of the fuse link	
<ul style="list-style-type: none"> • for short-circuit protection of the main circuit <ul style="list-style-type: none"> — with type of assignment 1 required — with type of assignment 2 required • for short-circuit protection of the auxiliary switch required 	<p>gL/gG LV HRC 3NA, DIAZED 5SB, NEOZED 5SE: 35 A</p> <p>gL/gG LV HRC 3NA, DIAZED 5SB, NEOZED 5SE: 20 A</p> <p>fuse gL/gG: 10 A</p>

Installation/ mounting/ dimensions:

mounting position	+/-180° rotation possible on vertical mounting surface; can be tilted forward and backward by +/- 22.5° on vertical mounting surface
Mounting type	screw and snap-on mounting onto 35 mm standard mounting rail
Height	84 mm
Width	90 mm
Depth	83 mm
Required spacing	
<ul style="list-style-type: none"> • with side-by-side mounting <ul style="list-style-type: none"> — forwards — Backwards — upwards — downwards — at the side • for grounded parts <ul style="list-style-type: none"> — forwards 	<p>6 mm</p> <p>0 mm</p> <p>6 mm</p> <p>6 mm</p> <p>6 mm</p> <p>6 mm</p> <p>6 mm</p>

— Backwards	0 mm
— upwards	6 mm
— at the side	6 mm
— downwards	6 mm
• for live parts	
— forwards	6 mm
— Backwards	0 mm
— upwards	6 mm
— downwards	6 mm
— at the side	6 mm

Connections/ Terminals:

Type of electrical connection	
• for main current circuit	spring-loaded terminals
• for auxiliary and control current circuit	spring-loaded terminals
Type of connectable conductor cross-section	
• for main contacts	
— single or multi-stranded	2x (0,5 ... 4 mm ²)
— finely stranded with core end processing	2x (0.5 ... 2.5 mm ²)
— finely stranded without core end processing	2x (0.5 ... 2.5 mm ²)
• for AWG conductors for main contacts	1x (20 ... 12)
Type of connectable conductor cross-section	
• for auxiliary contacts	
— single or multi-stranded	2x (0,5 ... 2,5 mm ²)
— finely stranded with core end processing	2x (0.5 ... 1.5 mm ²)
— finely stranded without core end processing	2x (0.5 ... 1.5 mm ²)
• for AWG conductors for auxiliary contacts	2x (20 ... 14)



Safety related data:

B10 value with high demand rate acc. to SN 31920	1 000 000
Proportion of dangerous failures	
• with low demand rate acc. to SN 31920	40 %
• with high demand rate acc. to SN 31920	75 %
T1 value for proof test interval or service life acc. to IEC 61508	20 y



Communication/ Protocol:

Product function Bus communication	No
Protocol is supported	
• AS-interface protocol	No

Certificates/ approvals:

General Product Approval			Declaration of Conformity	Test Certificates	
 CSA	 UL		 EG-Konf.	Typprüfbescheinigung/Werkszeugnis	spezielle Prüfbescheinigungen

Shipping Approval					
 ABS	 BUREAU VERITAS	 DNV	 GL	 LRS	 PRS

Shipping Approval	other
 RINA	 RMRS
	Umweltbestätigung

Further information

Information- and Downloadcenter (Catalogs, Brochures,...)

<http://www.siemens.com/industrial-controls/catalogs>

Industry Mall (Online ordering system)

<http://www.siemens.com/industrymall>

Cax online generator

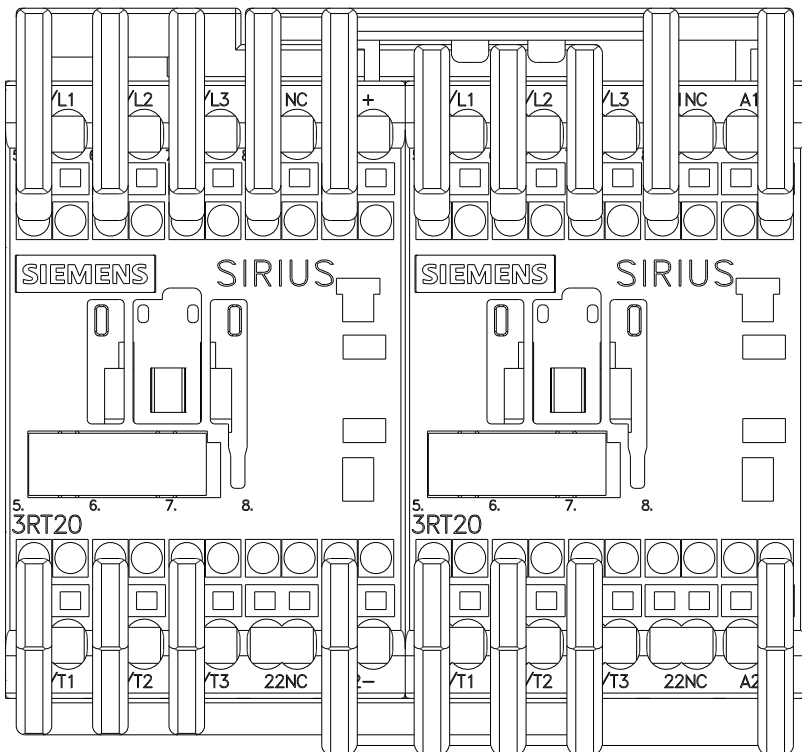
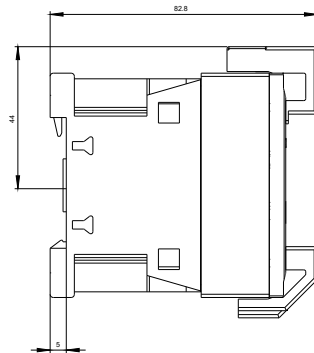
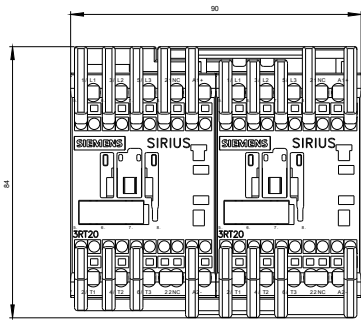
<http://support.automation.siemens.com/WW/CAXorder/default.aspx?lang=en&mlfb=3RA23158XB302BB4>

Service&Support (Manuals, Certificates, Characteristics, FAQs,...)

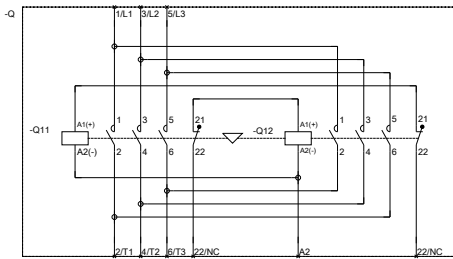
<https://support.industry.siemens.com/cs/ww/en/ps/3RA23158XB302BB4>

Image database (product images, 2D dimension drawings, 3D models, device circuit diagrams, EPLAN macros, ...)

http://www.automation.siemens.com/bilddb/cax_de.aspx?mlfb=3RA23158XB302BB4&lang=en



WENDEKOMBINATION BGR. S00



REVERSING COMB. SZ S00

last modified:

29.09.2015