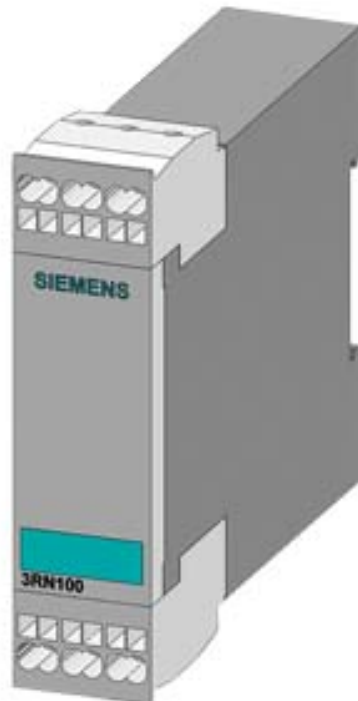


THERMISTOR MOTOR PROTECTION COMPACT
EVALUATION UNIT AUTO, 1W, DC 24V SPRING-
LOADED TERMINAL



General technical data:

| | | |
|--|----|-------|
| Type of voltage | | AC/DC |
| Supply voltage frequency | | |
| <ul style="list-style-type: none"> • 1 for auxiliary and control current circuit <ul style="list-style-type: none"> — Rated value | Hz | 50 |
| <ul style="list-style-type: none"> • 2 for auxiliary and control current circuit Rated value | Hz | 60 |
| Control supply voltage | | |
| <ul style="list-style-type: none"> • 1 <ul style="list-style-type: none"> — at AC <ul style="list-style-type: none"> — at 50 Hz Rated value — at 60 Hz Rated value — at DC <ul style="list-style-type: none"> — Rated value | V | 24 |
| | V | 24 |
| | V | 24 |
| Number of measuring circuits | | 1 |
| Number of NC contacts for auxiliary contacts | | 0 |
| Number of NO contacts for auxiliary contacts | | 0 |
| Number of CO contacts for auxiliary contacts | | 1 |
| Measurable temperature | | |

| | | |
|--|----|-------------|
| • initial value | °C | 60 |
| • Full-scale value | °C | 180 |
| Product function | | |
| • reclosing lockout | | No |
| • Auto-reset | | Yes |
| • Fault storage | | No |
| • External reset | | No |
| Equipment marking acc. to DIN EN 61346-2 | | K |
| Equipment marking acc. to DIN 40719 extended according to IEC 204-2 acc. to IEC 750 | | K |
| Ambient temperature during operation | °C | -25 ... +60 |

Mechanical data:

| | | |
|--|----|-------------------------|
| Type of electrical connection for auxiliary and control current circuit | | spring-loaded terminals |
| Type of electrical connection Plug-in socket | | No |
| Display version LED | | Yes |
| Protection class IP | | IP20 |
| Width | mm | 22.5 |
| Height | mm | 84 |
| Depth | mm | 91 |

Certificates/ approvals:

| | | |
|--------------------------|-----|--------------------------------|
| General Product Approval | EMC | For use in hazardous locations |
|--------------------------|-----|--------------------------------|



| | | |
|---------------------------|-------------------|-------------------|
| Declaration of Conformity | Test Certificates | Shipping Approval |
|---------------------------|-------------------|-------------------|



[spezielle Prüfbescheinigung](#)
n



| | |
|-------------------|-------|
| Shipping Approval | other |
|-------------------|-------|



[sonstig](#)

[Umweltbestätigung](#)

Further information

Information- and Downloadcenter (Catalogs, Brochures,...)

<http://www.siemens.com/industrial-controls/catalogs>

Industry Mall (Online ordering system)

<http://www.siemens.com/industrymall>

Cax online generator

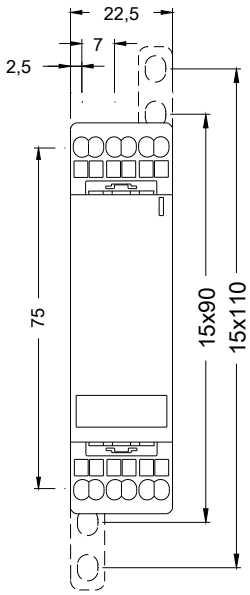
<http://support.automation.siemens.com/WW/CAXorder/default.aspx?lang=en&mfb=3RN10002AB00>

Service&Support (Manuals, Certificates, Characteristics, FAQs,...)

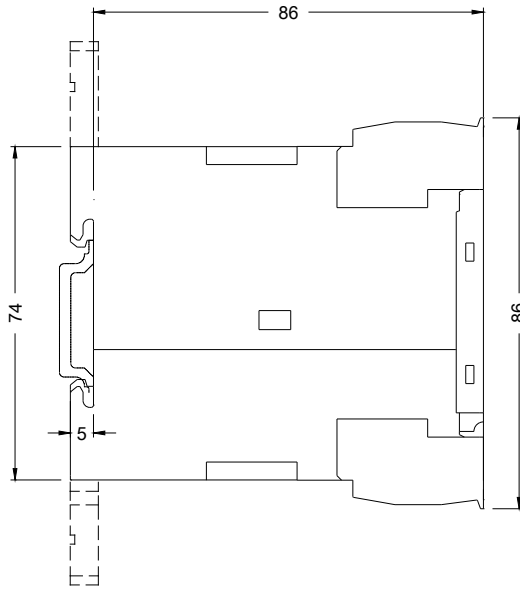
<https://support.industry.siemens.com/cs/ww/en/ps/3RN10002AB00>

Image database (product images, 2D dimension drawings, 3D models, device circuit diagrams, EPLAN macros, ...)

http://www.automation.siemens.com/bilddb/cax_de.aspx?mfb=3RN10002AB00&lang=en



last modified:



17.07.2015