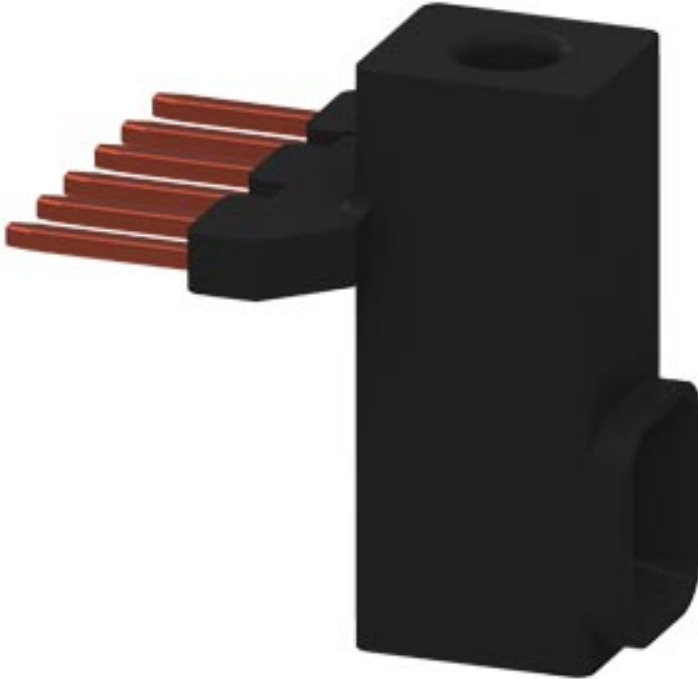


PARALLEL CONNECTION WITH TERMINAL, 3-POLE FOR 3RT101.








General technical data:




product brand name		SIRIUS
Product designation		Infeed terminal
Design of the product		Parallel switching connection for contactors S00
Size of contactor		S00

Installation/ mounting/ dimensions:

Mounting type		screw fixing
---------------	--	--------------

Certificates/ approvals:

General Product Approval		Declaration of Conformity	Test Certificates	Shipping Approval	
			spezielle Prüfbescheinigung <u>n</u>		
CSA	UL	EG-Konf.		ABS	BUREAU VERITAS

Shipping Approval			other		
			sonstig	Bestätigungen	Umweltbestätigung
GL	PRS	RINA			

Further information

Information- and Downloadcenter (Catalogs, Brochures,...)

<http://www.siemens.com/industrial-controls/catalogs>

Industry Mall (Online ordering system)

<http://www.siemens.com/industrymall>

Cax online generator

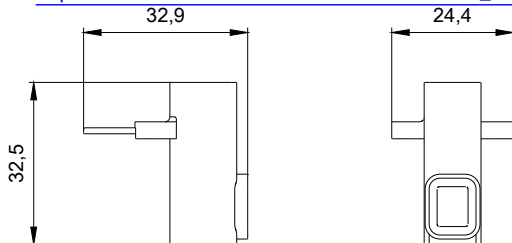
<http://support.automation.siemens.com/WW/CAXorder/default.aspx?lang=en&mlfb=3RT19164BB31>

Service&Support (Manuals, Certificates, Characteristics, FAQs,...)

<https://support.industry.siemens.com/cs/ww/en/ps/3RT19164BB31>

Image database (product images, 2D dimension drawings, 3D models, device circuit diagrams, EPLAN macros, ...)

http://www.automation.siemens.com/bilddb/cax_de.aspx?mlfb=3RT19164BB31&lang=en



last modified:

13.08.2015