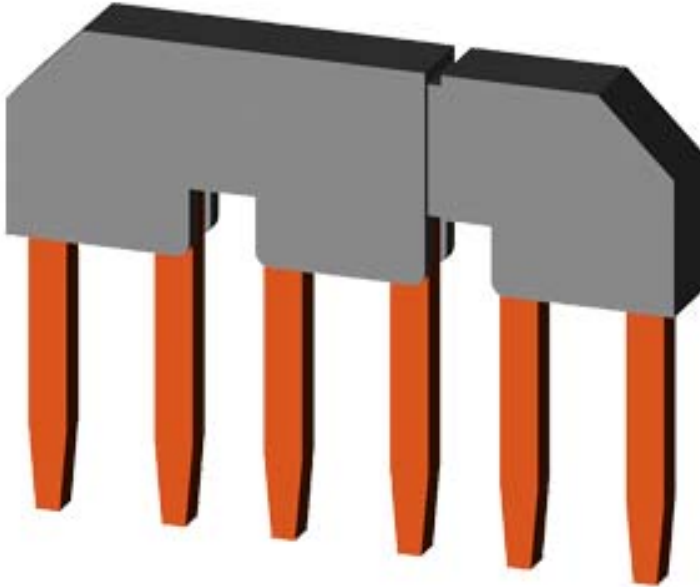


PARALLEL CONNECTION W/O TERMINAL, 3-POLE
FOR 3RT101., SCREW CONNECTION
(REPLACEMENT FOR 3TX4490-2C, FOR 3TF2, 3TK2)







General technical data:

product brand name		SIRIUS
Product designation		Connection jumper
Design of the product		Parallel switching connection for contactors S00
Size of contactor		S00

Installation/ mounting/ dimensions:

Mounting type		screw fixing
---------------	--	--------------

Certificates/ approvals:

General Product Approval			Declaration of Conformity	Test Certificates	
 CSA	 UL		 EG-Konf.	spezielle Prüfbescheinigung <u>n</u>	Typprüfbescheinigung/Werkszeugnis

Shipping Approval					other
 ABS	 BUREAU VERITAS	 GL	 PRS	 RINA	Bestätigungen

other	
Umweltbestätigung	sonstig

Further information

Information- and Downloadcenter (Catalogs, Brochures,...)

<http://www.siemens.com/industrial-controls/catalogs>

Industry Mall (Online ordering system)

<http://www.siemens.com/industrymall>

Cax online generator

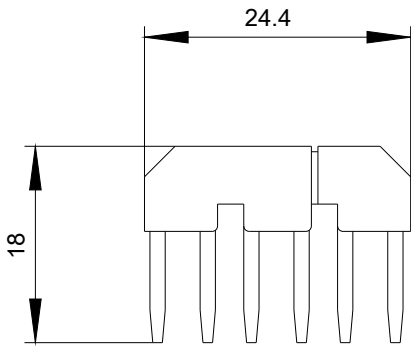
<http://support.automation.siemens.com/WW/CAXorder/default.aspx?lang=en&mlfb=3RT19164BA31>

Service&Support (Manuals, Certificates, Characteristics, FAQs,...)

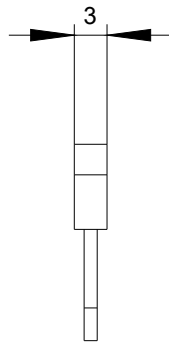
<https://support.industry.siemens.com/cs/ww/en/ps/3RT19164BA31>

Image database (product images, 2D dimension drawings, 3D models, device circuit diagrams, EPLAN macros, ...)

http://www.automation.siemens.com/bilddb/cax_de.aspx?mlfb=3RT19164BA31&lang=en



last modified:



13.08.2015