

CONT. F. RAILW. A., AC-3, 15KW/400V, 1NO+1NC, . DC 24V, 0,7...1,25\*US, W. VARISTOR INTEGRATED, 3-POLE SIZE S0, SPRING-TYPE TERM.



product brand name	SIRIUS
Product designation	3RT2 contactor
<b>General technical data:</b>	
Size of contactor	S0
Product expansion	
• function module for communication	No
• Auxiliary switch	Yes
Insulation voltage	
• Rated value	690 V
Surge voltage resistance Rated value	6 kV
maximum permissible voltage for safe isolation between coil and main contacts acc. to EN 60947-1	400 V
Protection class IP	
• on the front	IP20
• of the terminal	IP20
Degree of pollution	3
Shock resistance	
• at rectangular impulse	
— at DC	10g / 5 ms, 7,5g / 10 ms

<ul style="list-style-type: none"> <li>• with sine pulse <ul style="list-style-type: none"> <li>— at DC</li> </ul> </li> </ul>	15g / 5 ms, 10g / 10 ms
<b>Mechanical service life (switching cycles)</b> <ul style="list-style-type: none"> <li>• of the contactor typical</li> <li>• of the contactor with added electronics-compatible auxiliary switch block typical</li> <li>• of the contactor with added auxiliary switch block typical</li> </ul>	10 000 000 5 000 000 10 000 000
<b>Ambient conditions:</b>	
<b>Installation altitude at height above sea level maximum</b>	2 000 m
<b>Ambient temperature</b> <ul style="list-style-type: none"> <li>• during operation</li> <li>• during storage</li> </ul>	-40 ... +70 °C -55 ... +80 °C
<b>Main circuit:</b>	
<b>Number of NO contacts for main contacts</b>	3
<b>Number of NC contacts for main contacts</b>	0
<b>Operating voltage</b> <ul style="list-style-type: none"> <li>• at AC-3 Rated value maximum</li> </ul>	690 V
<b>Operating current</b> <ul style="list-style-type: none"> <li>• at AC-1 at 400 V <ul style="list-style-type: none"> <li>— at ambient temperature 40 °C Rated value</li> </ul> </li> <li>• at AC-1 up to 690 V <ul style="list-style-type: none"> <li>— at ambient temperature 40 °C Rated value</li> <li>— at ambient temperature 60 °C Rated value</li> </ul> </li> <li>• at AC-2 at 400 V Rated value</li> <li>• at AC-3 <ul style="list-style-type: none"> <li>— at 400 V Rated value</li> <li>— at 500 V Rated value</li> <li>— at 690 V Rated value</li> </ul> </li> </ul>	50 A 50 A 42 A 32 A 32 A 32 A 21 A
<b>Connectable conductor cross-section in main circuit at AC-1</b> <ul style="list-style-type: none"> <li>• at 60 °C minimum permissible</li> <li>• at 40 °C minimum permissible</li> </ul>	10 mm <sup>2</sup> 10 mm <sup>2</sup>
<b>Operating current for ≥ 200000 operating cycles at AC-4</b> <ul style="list-style-type: none"> <li>• at 400 V Rated value</li> <li>• at 690 V Rated value</li> </ul>	12 A 12 A
<b>Operating current</b> <ul style="list-style-type: none"> <li>• at 1 current path at DC-1 <ul style="list-style-type: none"> <li>— at 24 V Rated value</li> <li>— at 110 V Rated value</li> </ul> </li> </ul>	35 A 4.5 A

— at 220 V Rated value	1 A
— at 440 V Rated value	0.4 A
— at 600 V Rated value	0.25 A
• with 2 current paths in series at DC-1	
— at 24 V Rated value	35 A
— at 110 V Rated value	35 A
— at 220 V Rated value	5 A
— at 440 V Rated value	1 A
— at 600 V Rated value	0.8 A
• with 3 current paths in series at DC-1	
— at 24 V Rated value	35 A
— at 110 V Rated value	35 A
— at 220 V Rated value	35 A
— at 440 V Rated value	2.9 A
— at 600 V Rated value	1.4 A
<b>Operating current</b>	
• at 1 current path at DC-3 at DC-5	
— at 24 V Rated value	20 A
— at 110 V Rated value	2.5 A
— at 220 V Rated value	1 A
— at 440 V Rated value	0.09 A
— at 600 V Rated value	0.06 A
• with 2 current paths in series at DC-3 at DC-5	
— at 110 V Rated value	15 A
— at 220 V Rated value	3 A
— at 24 V Rated value	35 A
— at 440 V Rated value	0.27 A
— at 600 V Rated value	0.16 A
• with 3 current paths in series at DC-3 at DC-5	
— at 110 V Rated value	35 A
— at 220 V Rated value	10 A
— at 24 V Rated value	35 A
— at 440 V Rated value	0.6 A
— at 600 V Rated value	0.6 A
<b>Operating power</b>	
• at AC-1	
— at 230 V Rated value	16 kW
— at 230 V at 60 °C Rated value	15.5 kW
— at 400 V Rated value	28 kW
— at 400 V at 60 °C Rated value	27.5 kW
— at 690 V Rated value	48 kW

<ul style="list-style-type: none"> <li>— at 690 V at 60 °C Rated value</li> </ul>	47.5 kW
<ul style="list-style-type: none"> <li>• at AC-2 at 400 V Rated value</li> </ul>	15 kW
<ul style="list-style-type: none"> <li>• at AC-3</li> </ul>	
<ul style="list-style-type: none"> <li>— at 230 V Rated value</li> </ul>	7.5 kW
<ul style="list-style-type: none"> <li>— at 400 V Rated value</li> </ul>	15 kW
<ul style="list-style-type: none"> <li>— at 690 V Rated value</li> </ul>	18.5 kW
<b>Operating power for ≥ 200000 operating cycles at AC-4</b>	
<ul style="list-style-type: none"> <li>• at 400 V Rated value</li> </ul>	6 kW
<ul style="list-style-type: none"> <li>• at 690 V Rated value</li> </ul>	10.3 kW
<b>Thermal short-time current limited to 10 s</b>	260 A
<b>Active power loss at AC-3 at 400 V for rated value of the operating current per conductor</b>	2.7 W
<b>No-load switching frequency</b>	
<ul style="list-style-type: none"> <li>• at DC</li> </ul>	1 500 1/h
<b>Operating frequency</b>	
<ul style="list-style-type: none"> <li>• at AC-1 maximum</li> </ul>	1 000 1/h
<ul style="list-style-type: none"> <li>• at AC-2 maximum</li> </ul>	750 1/h
<ul style="list-style-type: none"> <li>• at AC-3 maximum</li> </ul>	750 1/h
<ul style="list-style-type: none"> <li>• at AC-4 maximum</li> </ul>	250 1/h

<b>Control circuit/ Control:</b>	
<b>Type of voltage of the control supply voltage</b>	DC
<b>Control supply voltage at DC</b>	
<ul style="list-style-type: none"> <li>• Rated value</li> </ul>	24 V
<b>Operating range factor control supply voltage rated value of the magnet coil at DC</b>	0.7 ... 1.25
<b>Design of the surge suppressor</b>	with varistor
<b>Closing power of the magnet coil at DC</b>	6.7 W
<b>Holding power of the magnet coil at DC</b>	0.8 W
<b>Closing delay</b>	
<ul style="list-style-type: none"> <li>• at DC</li> </ul>	50 ... 170 ms
<b>Opening delay</b>	
<ul style="list-style-type: none"> <li>• at DC</li> </ul>	15 ... 17.5 ms
<b>Arcing time</b>	10 ... 10 ms
<b>Residual current of the electronics for control with signal &lt;0&gt;</b>	
<ul style="list-style-type: none"> <li>• at AC at 230 V maximum permissible</li> </ul>	7 mA
<ul style="list-style-type: none"> <li>• at DC at 24 V maximum permissible</li> </ul>	16 mA

<b>Auxiliary circuit:</b>	
<b>Number of NC contacts</b>	
<ul style="list-style-type: none"> <li>• for auxiliary contacts</li> </ul>	
<ul style="list-style-type: none"> <li>— instantaneous contact</li> </ul>	1

<b>Number of NO contacts</b>	
<ul style="list-style-type: none"> <li>• for auxiliary contacts <ul style="list-style-type: none"> <li>— instantaneous contact</li> </ul> </li> </ul>	1
Operating current at AC-12 maximum	10 A
<b>Operating current at AC-15</b>	
<ul style="list-style-type: none"> <li>• at 230 V Rated value</li> <li>• at 400 V Rated value</li> <li>• at 500 V Rated value</li> <li>• at 690 V Rated value</li> </ul>	10 A 3 A 2 A 1 A
<b>Operating current at DC-12</b>	
<ul style="list-style-type: none"> <li>• at 24 V Rated value</li> <li>• at 48 V Rated value</li> <li>• at 60 V Rated value</li> <li>• at 110 V Rated value</li> <li>• at 125 V Rated value</li> <li>• at 220 V Rated value</li> <li>• at 600 V Rated value</li> </ul>	10 A 6 A 6 A 3 A 2 A 1 A 0.15 A
<b>Operating current at DC-13</b>	
<ul style="list-style-type: none"> <li>• at 24 V Rated value</li> <li>• at 48 V Rated value</li> <li>• at 60 V Rated value</li> <li>• at 110 V Rated value</li> <li>• at 125 V Rated value</li> <li>• at 220 V Rated value</li> <li>• at 600 V Rated value</li> </ul>	10 A 2 A 2 A 1 A 0.9 A 0.3 A 0.1 A
<b>Contact reliability of the auxiliary contacts</b>	1 faulty switching per 100 million (17 V, 1 mA)
<b>UL/CSA ratings:</b>	
<b>Full-load current (FLA) for three-phase AC motor</b>	
<ul style="list-style-type: none"> <li>• at 480 V Rated value</li> <li>• at 600 V Rated value</li> </ul>	27 A 27 A
<b>yielded mechanical performance [hp]</b>	
<ul style="list-style-type: none"> <li>• for single-phase AC motor <ul style="list-style-type: none"> <li>— at 110/120 V Rated value</li> <li>— at 230 V Rated value</li> </ul> </li> <li>• for three-phase AC motor <ul style="list-style-type: none"> <li>— at 200/208 V Rated value</li> <li>— at 220/230 V Rated value</li> <li>— at 460/480 V Rated value</li> <li>— at 575/600 V Rated value</li> </ul> </li> </ul>	2 hp 5 hp 10 hp 10 hp 20 hp 25 hp
<b>Contact rating of the auxiliary contacts acc. to UL</b>	A600 / Q600

Short-circuit:

<b>Design of the fuse link</b> <ul style="list-style-type: none"> <li>• for short-circuit protection of the main circuit <ul style="list-style-type: none"> <li>— with type of assignment 1 required</li> <li>— with type of assignment 2 required</li> </ul> </li> <li>• for short-circuit protection of the auxiliary switch required</li> </ul>	gL/gG NH 3NA, DIAZED 5SB, NEOZED 5SE: 125 A gL/gG NH 3NA, DIAZED 5SB, NEOZED 5SE: 50 A fuse gL/gG: 10 A
--	---

<b>Installation/ mounting/ dimensions:</b>	
--	--

<b>mounting position</b>	+/-180° rotation possible on vertical mounting surface; can be tilted forward and backward by +/- 22.5° on vertical mounting surface
<b>Mounting type</b> <ul style="list-style-type: none"> <li>• Side-by-side mounting</li> </ul>	screw and snap-on mounting onto 35 mm standard mounting rail according to DIN EN 50022 Yes
<b>Height</b>	102 mm
<b>Width</b>	45 mm
<b>Depth</b>	107 mm
<b>Required spacing</b> <ul style="list-style-type: none"> <li>• with side-by-side mounting <ul style="list-style-type: none"> <li>— forwards</li> <li>— Backwards</li> <li>— upwards</li> <li>— downwards</li> <li>— at the side</li> </ul> </li> <li>• for grounded parts <ul style="list-style-type: none"> <li>— forwards</li> <li>— Backwards</li> <li>— upwards</li> <li>— at the side</li> <li>— downwards</li> </ul> </li> <li>• for live parts <ul style="list-style-type: none"> <li>— forwards</li> <li>— Backwards</li> <li>— upwards</li> <li>— downwards</li> <li>— at the side</li> </ul> </li> </ul>	0 mm 0 mm 0 mm 0 mm 0 mm  0 mm 0 mm 0 mm 6 mm 0 mm  0 mm 0 mm 0 mm 0 mm 6 mm

<b>Safety related data:</b>	
-----------------------------	--

<b>B10 value with high demand rate acc. to SN 31920</b>	1 000 000
<b>Proportion of dangerous failures</b> <ul style="list-style-type: none"> <li>• with low demand rate acc. to SN 31920</li> <li>• with high demand rate acc. to SN 31920</li> </ul>	40 % 73 %
<b>Product function</b> <ul style="list-style-type: none"> <li>• Mirror contact acc. to IEC 60947-4-1</li> </ul>	Yes

T1 value for proof test interval or service life acc. to IEC 61508

20 y

Certificates/ approvals:

General Product Approval	EMC	Functional Safety/Safety of Machinery
--------------------------	-----	---------------------------------------



[Baumusterbescheinigung](#)

Declaration of Conformity	Test Certificates	Shipping Approval
---------------------------	-------------------	-------------------



EG-Konf.

[spezielle Prüfbescheinigung](#)

[n](#)



ABS



BUREAU VERITAS



DNV



GL

Shipping Approval	other
-------------------	-------



LRS



PRS



RINA



RMRS

[Bestätigungen](#)

[Umweltbestätigung](#)

other	Railway
-------	---------



VDE

[Bestätigungen](#)

Further information

**Information- and Downloadcenter (Catalogs, Brochures,...)**

<http://www.siemens.com/industrial-controls/catalogs>

**Industry Mall (Online ordering system)**

<http://www.siemens.com/industrymall>

**Cax online generator**

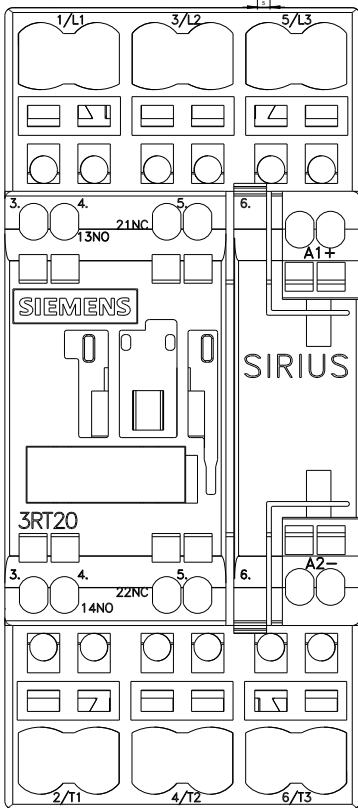
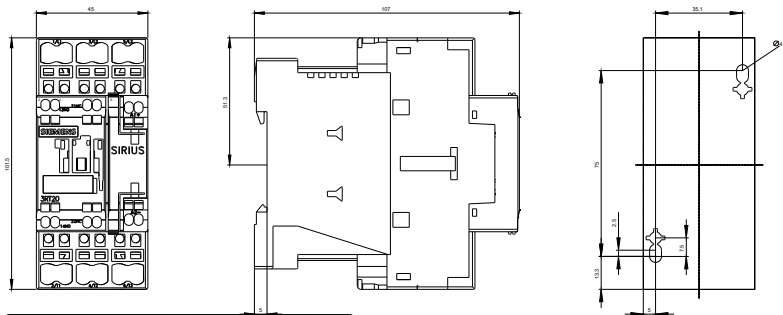
<http://support.automation.siemens.com/WW/CAXorder/default.aspx?lang=en&mlfb=3RT20272XB400LA2>

**Service&Support (Manuals, Certificates, Characteristics, FAQs,...)**

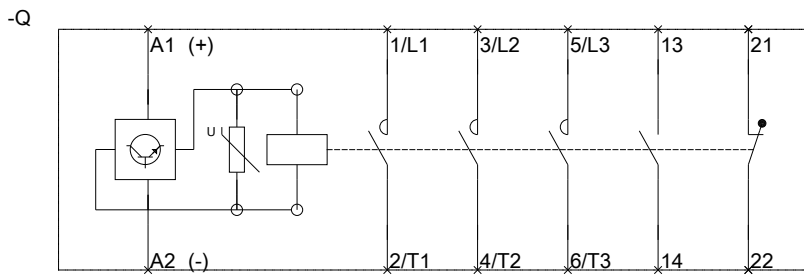
<https://support.industry.siemens.com/cs/ww/en/ps/3RT20272XB400LA2>

**Image database (product images, 2D dimension drawings, 3D models, device circuit diagrams, EPLAN macros, ...)**

[http://www.automation.siemens.com/bilddb/cax\\_de.aspx?mlfb=3RT20272XB400LA2&lang=en](http://www.automation.siemens.com/bilddb/cax_de.aspx?mlfb=3RT20272XB400LA2&lang=en)







last modified:

10.08.2015