

THROUGH-TYPE TERMINAL THERMOPL. SCREW  
 TERMINAL ON BOTH ENDS TERMINAL BLOCK  
 10POLE, BEIGE W. INSCRIPTION 1...10 65.5MM, SZ.  
 4

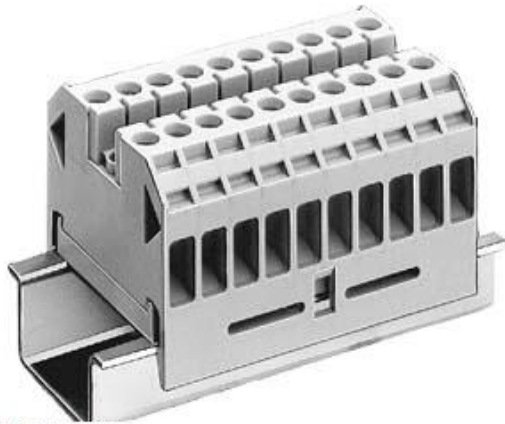


Figure similar

Model		
Design of terminal / Terminal levels internally linked		No
General technical data		
Insulation material		thermoplastic
Terminal contact spacing	mm	65.5
Protection class		
Combustibility class acc. to UL 94		V2
Main circuit		
Operating voltage / Rated value	V	800
Operating current / Rated value	A	32
Appearance		
Color		beige
Product details		
Product component / required / connection plate		No
Number		
Number of terminal levels		1
Number of terminal points / per terminal level		2
Connections		
Connectable conductor cross-section / stranded		
• minimum	mm <sup>2</sup>	4
• maximum	mm <sup>2</sup>	4
Connectable conductor cross-section		



<ul style="list-style-type: none"> <li>• solid <ul style="list-style-type: none"> <li>— minimum</li> <li>— maximum</li> </ul> </li> <li>• finely stranded <ul style="list-style-type: none"> <li>— with core end processing / minimum</li> <li>— with core end processing / maximum</li> <li>— without core end processing / minimum</li> <li>— without core end processing / maximum</li> </ul> </li> </ul>	mm <sup>2</sup> mm <sup>2</sup> mm <sup>2</sup> mm <sup>2</sup> mm <sup>2</sup> mm <sup>2</sup>	4 4 4 4 4 4
<b>Type of electrical connection</b>		
<ul style="list-style-type: none"> <li>• 1</li> <li>• 2</li> </ul>		screw-type terminal screw-type terminal
Position / of the terminal		lateral

<b>Mechanical Design</b>		
Height / with lowest-profile installation	mm	26
<b>Length</b>	mm	41
<b>Mounting type</b>		DIN rail 35 mm
Material / of the insulating body		Thermoplast

<b>Environmental conditions</b>		
<b>Ambient temperature</b>		
<ul style="list-style-type: none"> <li>• during operation / minimum</li> <li>• during operation / maximum</li> </ul>	°C °C	-25 55

<b>Certificates</b>		
Design tested acc. to type of protection / EEx e		No

<b>General Product Approval</b>	<b>Test Certificates</b>	<b>Shipping Approval</b>
 CSA  GOST  UL  EAC	<a href="#">other</a>	 BUREAU VERITAS

<b>Shipping Approval</b>	<b>other</b>
 DNV  GL	<a href="#">Environmental Confirmations</a> <a href="#">other</a>

**Further information**

**Information- and Downloadcenter (Catalogs, Brochures,...)**  
<http://www.siemens.com/lowvoltage/catalogs>

**Industry Mall (Online ordering system)**  
<https://eb.automation.siemens.com/mall/en/WW/Catalog/Product/8WA10110DG22>

**Service&Support (Manuals, Certificates, Characteristics, FAQs,...)**

<http://support.automation.siemens.com/WW/view/en/8WA10110DG22/all>

**Image database (product images, 2D dimension drawings, 3D models, device circuit diagrams, ...)**

[http://www.automation.siemens.com/bilddb/cax\\_en.aspx?mlfb=8WA10110DG22](http://www.automation.siemens.com/bilddb/cax_en.aspx?mlfb=8WA10110DG22)

**CAX-Online-Generator**

<http://www.siemens.com/cax>

**Tender specifications**

<http://ausschreibungstexte.siemens.com/tiplv>

**last modified:**

11.03.2015