



Figure similar

RESIDUAL CURRENT TRANSFORMER FOR  
RESIDUAL CURRENT MONITORING . .

**General technical data:**

<b>product brand name</b>		SIRIUS
<b>Product designation</b>		Residual current transformer for fault current monitoring
<b>Product feature Touch protection</b>		Yes
<b>Type of electrical connection at output</b>		screw-type terminals
<b>Operating voltage Rated value maximum</b>	V	690
<b>Continuous current per phase maximum</b>	A	150
<b>Fault current at input Rated value</b>	A	40
<b>Surge voltage resistance Rated value</b>	kV	6
<b>Equipment marking acc. to DIN EN 81346-2</b>		B
<b>Equipment marking acc. to DIN 40719 extended according to IEC 204-2 acc. to IEC 750</b>		T
<b>Equipment marking acc. to DIN EN 61346-2</b>		B

**Connections/ Terminals:**

<b>Type of connectable conductor cross-section</b>		
<ul style="list-style-type: none"> <li>• solid</li> </ul>		1x (0.5 ... 2.5 mm <sup>2</sup> )
<ul style="list-style-type: none"> <li>• finely stranded                             <ul style="list-style-type: none"> <li>— with core end processing</li> </ul> </li> </ul>		1x (0.5 ... 1.5 mm <sup>2</sup> )
<ul style="list-style-type: none"> <li>• for AWG conductors                             <ul style="list-style-type: none"> <li>— solid</li> </ul> </li> </ul>		1x (20 ... 13)

**Ambient conditions:**




<b>Ambient temperature</b>		
<ul style="list-style-type: none"> <li>• during transport</li> </ul>	°C	-25 ... +60

• during operation	°C	-25 ... +60
• during storage	°C	-40 ... +85
Relative humidity during operation	%	95
Installation altitude at height above sea level	m	2 000

#### Installation/ mounting/ dimensions:

Diameter of feed through opening	mm	55
Width	mm	92
Height	mm	64
Depth	mm	98
mounting position		standing, on horizontal mounting surface
Mounting type		Screw and rail mounting
Tightening torque with screw-type terminals	N·m	0.5 ... 0.6
Tightening torque [lbf·in] with screw-type terminals	lbf·in	4.4 ... 5.3

#### Certificates/ approvals:

General Product Approval		Test Certificates	other
			
ccc		UL	
		<a href="#">Special Test Certificate</a>	<a href="#">Type Test Certificates/Test Report</a>
			<a href="#">Declaration of Conformity</a>

#### Further information

##### Information- and Downloadcenter (Catalogs, Brochures,...)

<http://www.siemens.com/industrial-controls/catalogs>

##### Industry Mall (Online ordering system)

<http://www.siemens.com/industrymall>

##### Cax online generator

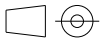
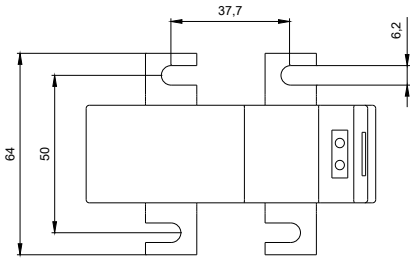
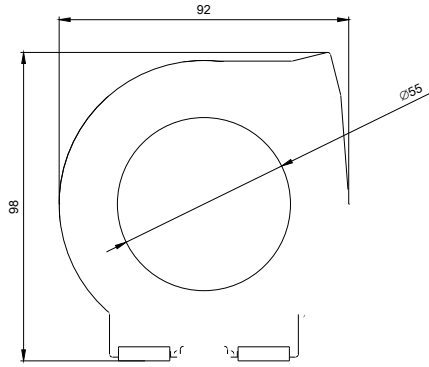
<http://support.automation.siemens.com/WW/CAXorder/default.aspx?lang=en&mlfb=3UL23031A>

##### Service&Support (Manuals, Certificates, Characteristics, FAQs,...)

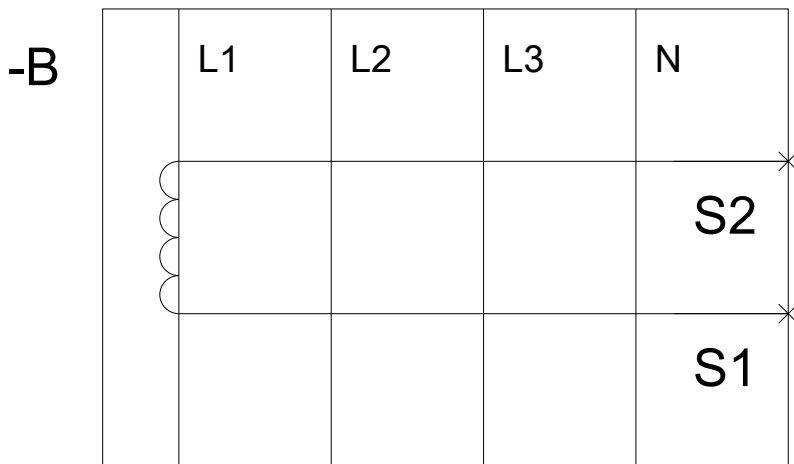
<https://support.industry.siemens.com/cs/ww/en/ps/3UL23031A>

##### Image database (product images, 2D dimension drawings, 3D models, device circuit diagrams, EPLAN macros, ...)

[http://www.automation.siemens.com/bilddb/cax\\_de.aspx?mlfb=3UL23031A&lang=en](http://www.automation.siemens.com/bilddb/cax_de.aspx?mlfb=3UL23031A&lang=en)



W8 8883: 3UL2303-1A\_ALL



last modified:

16.03.2015