



SIRIUS SOFT STARTER, SIZE S0, 32A,  
15KW/400V, 40 DEGREES, 200-480V AC,  
24V AC/DC, SPRING-LOADED TERMINALS

**General details:**

<b>product brand name</b>		SIRIUS
<b>Product feature</b>		
<ul style="list-style-type: none"> <li>integrated bypass contact system</li> </ul>		Yes
<ul style="list-style-type: none"> <li>Thyristors</li> </ul>		Yes
<b>Product function</b>		
<ul style="list-style-type: none"> <li>Intrinsic device protection</li> </ul>		No
<ul style="list-style-type: none"> <li>motor overload protection</li> </ul>		No
<ul style="list-style-type: none"> <li>Evaluation of thermistor motor protection</li> </ul>		No
<ul style="list-style-type: none"> <li>External reset</li> </ul>		No
<ul style="list-style-type: none"> <li>Adjustable current limitation</li> </ul>		No
<ul style="list-style-type: none"> <li>inside-delta circuit</li> </ul>		No
<b>Product component / Motor brake output</b>		No
<b>Reference code</b>		
<ul style="list-style-type: none"> <li>acc. to DIN EN 61346-2</li> </ul>		Q
<ul style="list-style-type: none"> <li>acc. to DIN 40719 extended according to IEC 204-2 / acc. to IEC 750</li> </ul>		G

**Power Electronics:**

<b>Product designation</b>		soft starters for standard applications
Operating current		

• at 40 °C / Rated value	A	32
• at 50 °C / Rated value	A	29
• at 60 °C / Rated value	A	26
<b>Mechanical power output / for three-phase motors</b>		
• at 230 V / at standard circuit / at 40 °C		
• Rated value	W	7,500
• at 400 V / at standard circuit / at 40 °C		
• Rated value	W	15,000
<b>yielded mechanical performance [hp] / for three-phase AC motor / at 200/208 V / at standard circuit / at 50 °C / Rated value</b>	hp	7.5
<b>Operating frequency</b>		
• Rated value	Hz	50 ... 60
<b>Relative negative tolerance / of the operating frequency</b>	%	-10
<b>Relative positive tolerance / of the operating frequency</b>	%	10
<b>Operating voltage / at standard circuit / Rated value</b>	V	200 ... 480
<b>Relative negative tolerance / of the operating voltage / at standard circuit</b>	%	-15
<b>Relative positive tolerance / of the operating voltage / at standard circuit</b>	%	10
<b>Minimum load in % of I<sub>M</sub></b>	%	10
<b>Continuous operating current in % of I<sub>e</sub> / at 40 °C</b>	%	115
<b>Active power loss / at operating current / at 40 °C / during operation / typical</b>	W	13

#### Control electronics:

<b>Type of voltage / of the control supply voltage</b>		AC/DC
<b>Control supply voltage frequency / 1 / Rated value</b>	Hz	50
<b>Control supply voltage frequency / 2 / Rated value</b>	Hz	60
<b>Relative negative tolerance / of the control supply voltage frequency</b>	%	-10
<b>Relative positive tolerance / of the control supply voltage frequency</b>	%	10
<b>Control supply voltage / 1</b>		
• with AC / at 50 Hz	V	24
• with AC / at 60 Hz	V	24
<b>Relative negative tolerance / of the control supply voltage / with AC / at 60 Hz</b>	%	-15
<b>Relative positive tolerance / of the control supply voltage / with AC / at 60 Hz</b>	%	10
<b>Control supply voltage / 1 / for DC / Rated value</b>	V	24
<b>Relative negative tolerance / of the control supply voltage / for DC</b>	%	-15

<b>Relative positive tolerance / of the control supply voltage / for DC</b>	%	10
<b>Display version / for fault signal</b>		red

#### Mechanical design:

<b>Size of engine control device</b>		S0
<b>Width</b>	mm	45
<b>Height</b>	mm	150
<b>Depth</b>	mm	150
<b>Mounting type</b>		screw and snap-on mounting
<b>mounting position</b>		With vertical mounting surface +/-10° rotatable, with vertical mounting surface +/- 10° tiltable to the front and back
<b>Spacing required</b>		
• with side-by-side mounting	mm	60
• with side-by-side mounting	mm	15
• with side-by-side mounting	mm	40
<b>Installation altitude / at height above sea level</b>	m	5,000
<b>Cable length / maximum</b>	m	300
<b>Number of poles / for main current circuit</b>		3

#### Electrical connections:

<b>Design of the electrical connection</b>		
• for main current circuit		spring-loaded terminals
• for auxiliary and control current circuit		spring-loaded terminals
<b>Number of NC contacts / for auxiliary contacts</b>		0
<b>Number of NO contacts / for auxiliary contacts</b>		1
<b>Number of CO contacts / for auxiliary contacts</b>		0
<b>Type of connectable conductor cross-section / for main contacts / for box terminal / using the front clamping point</b>		
• solid		2x (1 ... 2.5 mm <sup>2</sup> ), 2x (2.5 ... 6 mm <sup>2</sup> )
• finely stranded / with core end processing		2x (1 ... 2.5 mm <sup>2</sup> ), 2x (2.5 ... 6 mm <sup>2</sup> )
<b>Type of connectable conductor cross-section / for AWG conductors / for main contacts / for box terminal</b>		
• using the front clamping point		1x 8, 2x (16 ... 10)
<b>Type of connectable conductor cross-section</b>		
• for main contacts		
• solid		1 ... 10 mm <sup>2</sup>
• finely stranded / with core end processing		1 ... 6 mm <sup>2</sup>
• for AWG conductors / for main contacts		16 ... 8
<b>Type of connectable conductor cross-section</b>		
• for auxiliary contacts		

- solid
- finely stranded / with core end processing
- for AWG conductors / for auxiliary contacts

2x (0.25 ... 2.5 mm <sup>2</sup> )
2x (0.25 ... 1.5 mm <sup>2</sup> )
2x (24 ... 14)

#### Ambient conditions:

##### Ambient temperature

- during operation
- during storage

°C	-25 ... +60
°C	-40 ... +80

##### Derating temperature

°C	40
----	----

##### Protection class IP

IP20
------

#### Certificates/approvals:

##### General Product Approval

##### EMC

##### Test Certificates



[Type Test Certificates/Test Report](#)

##### other

[Declaration of Conformity](#)

[other](#)

[Environmental Confirmations](#)

#### UL/CSA ratings

##### yielded mechanical performance [hp] / for three-phase AC motor

- at 220/230 V / at standard circuit
  - at 50 °C / Rated value
- at 460/480 V / at standard circuit
  - at 50 °C / Rated value

hp	7.5
hp	20

##### Contact rating / of the auxiliary contacts / acc. to UL

B300 / R300
-------------

#### Further information:

##### Information- and Downloadcenter (Catalogs, Brochures,...)

<http://www.siemens.com/industrial-controls/catalogs>

##### Industry Mall (Online ordering system)

<http://www.siemens.com/industrial-controls/mall>

##### CAX-Online-Generator

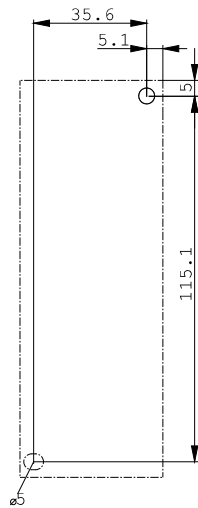
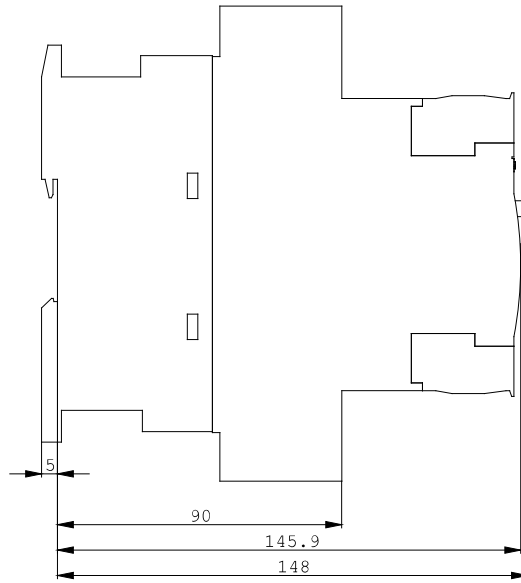
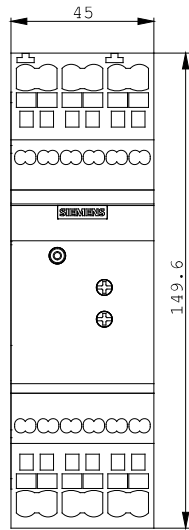
<http://www.siemens.com/cax>

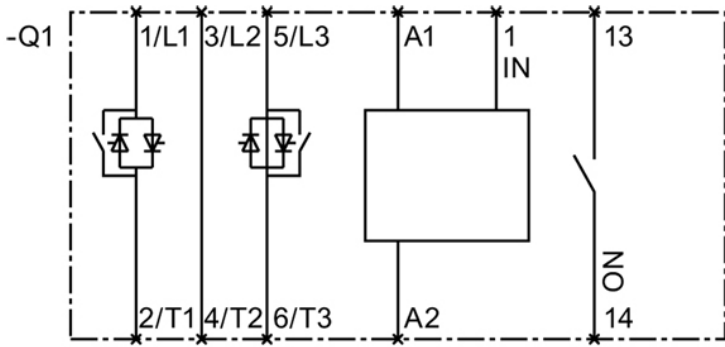
##### Service&Support (Manuals, Certificates, Characteristics, FAQs,...)

<http://support.automation.siemens.com/WW/view/en/3RW3027-2BB04/all>

##### Image database (product images, 2D dimension drawings, 3D models, device circuit diagrams, ...)

[http://www.automation.siemens.com/bilddb/cax\\_en.aspx?mlfb=3RW3027-2BB04](http://www.automation.siemens.com/bilddb/cax_en.aspx?mlfb=3RW3027-2BB04)





last change:

Sep 29, 2014