



CIRCUIT-BREAKER SZ S0,  
FOR MOTOR PROTECTION, CLASS 10,  
A-RELEASE 23...28A, N-RELEASE 364A,  
SCREW CONNECTION,  
STANDARD SW. CAPACITY,  
W. TRANSVERSE AUX. SWITCH 1NO+1NC

**General technical data:**

<b>product brand name</b>	SIRIUS
<b>Product designation</b>	3RV2 circuit breaker
<b>Size of the circuit-breaker</b>	S0
<b>Size of contactor / can be combined / company-specific</b>	S00
<b>Number of poles / for main current circuit</b>	3
<b>Product function</b>	
• Short circuit protection	Yes
• overload protection	Yes
• Phase failure detection	Yes
• System protection	Yes
• motor protection	Yes
• motor protection with overload relay function	No
• starter protection	No
• Transformer protection	No
• Disconnecter functionality	Yes
• Main switches with supply disconnect function and EM-STOP switches	No
<b>Design of the operating mechanism</b>	selector switch
<b>Product component</b>	
• Auxiliary switch	Yes

• undervoltage release		No
• Trip indicator		No
<b>Product expansion</b>		
• Auxiliary switch		Yes
• optional / motor drive		No
<b>Insulation voltage / with degree of pollution 3 / Rated value</b>	V	690
<b>Surge voltage resistance / Rated value</b>	kV	6
<b>Protection class IP</b>		
• of the terminal		IP20
• on the front		IP20
<b>Protection against electrical shock</b>		finger-safe
<b>Installation altitude / at height above sea level / maximum</b>	m	2,000
<b>Relative humidity</b>		
• during operation	%	10 ... 95
<b>Ambient temperature</b>		
• during transport	°C	-50 ... +80
• during storage	°C	-50 ... +80
• during operation	°C	-20 ... +60
<b>Shock resistance / acc. to IEC 60068-2-27</b>		25g / 11 ms
<b>Usage category</b>		
• acc. to IEC 60947-4-1		AC-3
<b>Active power loss / total / typical</b>	W	11

#### Main circuit:

<b>Operating current / Rated value</b>	A	28
<b>Operating voltage / Rated value</b>	V	690
<b>Type of voltage / for main current circuit</b>		AC/DC
<b>Operating frequency</b>		
• Rated value	Hz	50 ... 60
<b>Operating current / at AC-3 / at 400 V / Rated value</b>	A	28

#### Hilfsstromkreis

<b>Design of the fuse link / for short-circuit protection of the auxiliary switch / required</b>		Fuse gL/gG: 10 A, miniature circuit breaker C 6 A (short-circuit current I <sub>k</sub> < 400 A)
--	--	--

#### Protective and monitoring functions:

<b>Type of protection</b>		Increased safety
<b>Certificate of suitability / ATEX</b>		Yes
<b>Design of the overload circuit breaker</b>		thermal
<b>Adjustable response value current / of the current-dependent overload release</b>	A	23 ... 28

<b>Trip class</b>		CLASS 10
<b>Design of the short-circuit trip</b>		magnetic
<b>Response value current / of the instantaneous short-circuit release</b>	A	364
<b>Operational short-circuit current breaking capacity (Ics) / with AC</b>		
• at 240 V / Rated value	kA	100
• at 400 V / Rated value	kA	25
• at 500 V / Rated value	kA	5
• at 690 V / Rated value	kA	2
<b>Maximum short-circuit current breaking capacity (Icu)</b>		
• with AC / at 240 V / Rated value	kA	100
• with AC / at 400 V / Rated value	kA	55
• with AC / at 500 V / Rated value	kA	10
• with AC / at 690 V / Rated value	kA	4
<b>Design of the fuse link / for IT network / for short-circuit protection of the main circuit</b>		
• at 400 V		gL/gG 63 A
• at 500 V		gL/gG 63 A
• at 690 V		gL/gG 63 A
<b>Breaking capacity short-circuit current (Icn)</b>		
• with 1 current path / for DC / at 150 V / Rated value	kA	10
• with 2 current paths in series / for DC / at 300 V / Rated value	kA	10
• with 3 current paths in series / for DC / at 450 V / Rated value	kA	10

#### Installation/ mounting/ dimensions:

<b>Mounting type</b>		screw and snap-on mounting onto 35 mm standard mounting rail according to DIN EN 60715
<b>mounting position</b>		any
<b>Depth</b>	mm	96
<b>Height</b>	mm	97
<b>Width</b>	mm	45

#### Connections/ terminals:

<b>Arrangement of electrical connectors / for main current circuit</b>		Top and bottom
<b>Design of the electrical connection / for main current circuit</b>		screw-type terminals
<b>Type of connectable conductor cross-section</b>		
• for main contacts		
• single or multi-stranded		2x (1 ... 2,5 mm <sup>2</sup> ), 2x (2,5 ... 10 mm <sup>2</sup> )
• finely stranded		
• with core end processing		2x (1 ... 2.5 mm <sup>2</sup> ), 2x (2.5 ... 6 mm <sup>2</sup> ), 1x 10 mm <sup>2</sup>
• for AWG conductors / for main contacts		2x (16 ... 12), 2x (14 ... 8)

<b>Design of the electrical connection / for auxiliary and control current circuit</b>		screw-type terminals
<b>Type of connectable conductor cross-section</b>		
<ul style="list-style-type: none"> <li>• for auxiliary contacts <ul style="list-style-type: none"> <li>• single or multi-stranded</li> <li>• finely stranded <ul style="list-style-type: none"> <li>• with core end processing</li> </ul> </li> </ul> </li> <li>• for AWG conductors / for auxiliary contacts</li> </ul>		2x (0,5 ... 1,5 mm <sup>2</sup> ), 2x (0,75 ... 2,5 mm <sup>2</sup> )  2x (0.5 ... 1.5 mm <sup>2</sup> ), 2x (0.75 ... 2.5 mm <sup>2</sup> )  2x (20 ... 16), 2x (18 ... 14)

**UL/CSA ratings:**

<b>Operating voltage / acc. to UL 60947 / Rated value</b>	V	600
<b>Full-load current (FLA) / for three-phase AC motor</b>		
<ul style="list-style-type: none"> <li>• at 480 V / Rated value</li> <li>• at 600 V / Rated value</li> </ul>	A A	28 28
<b>Contact rating / of the auxiliary contacts / acc. to UL</b>		C300 / R300

**Certificates/ approvals:**

<b>General Product Approval</b>	<b>Declaration of Conformity</b>	<b>Test Certificates</b>
---------------------------------	----------------------------------	--------------------------



[Special Test Certificate](#)

[Type Test Certificates/Test Report](#)

**Shipping Approval**



**Shipping Approval**

**other**



[Confirmation](#)



[other](#)

[Environmental Confirmations](#)

**Further information:**

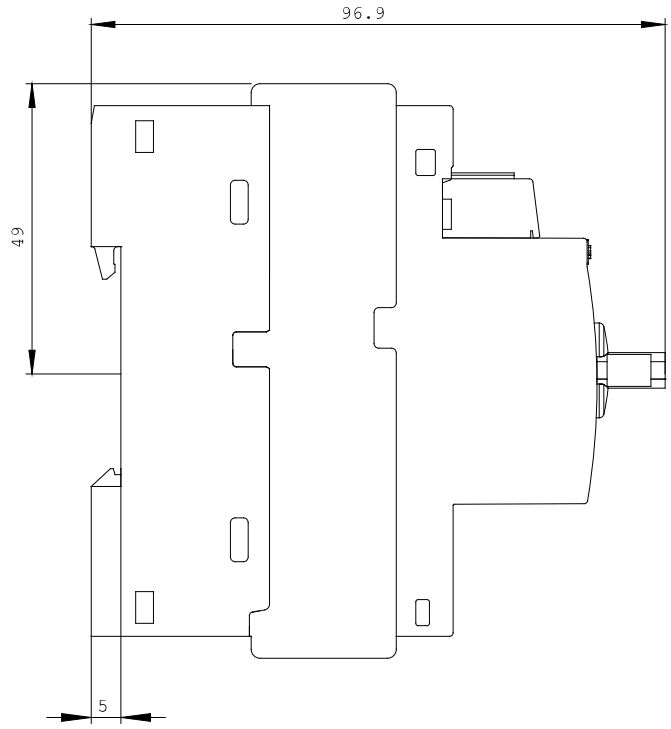
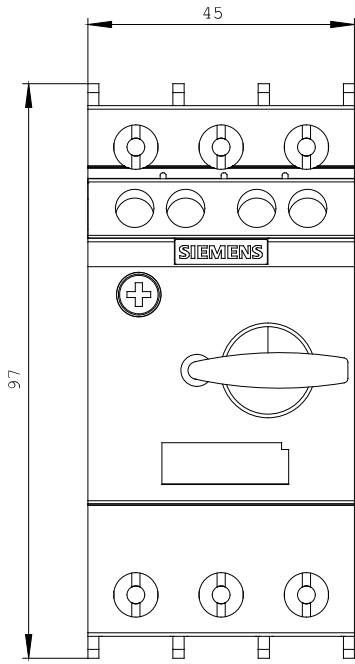
**Information- and Downloadcenter (Catalogs, Brochures,...)**  
<http://www.siemens.com/industrial-controls/catalogs>

**Industry Mall (Online ordering system)**  
<http://www.siemens.com/industrymall>

**Cax online generator**  
<http://www.siemens.com/cax>

**Service&Support (Manuals, Certificates, Characteristics, FAQs,...)**  
<http://support.automation.siemens.com/WWW/view/en/3RV2021-4NA15/all>

**Image database (product images, 2D dimension drawings, 3D models, device circuit diagrams, ...)**  
[http://www.automation.siemens.com/bilddb/cax\\_en.aspx?mlfb=3RV2021-4NA15](http://www.automation.siemens.com/bilddb/cax_en.aspx?mlfb=3RV2021-4NA15)



last change:

Nov 20, 2014