



LV HRC FUSE LINK GL/GG WITH NON-INSULATED GRIP LUGS WITH FRONT INDICATOR SIZE 1, 125A, AC 690V/DC 440V

Similar to image

Technical data:

product brand name		SETRON
Product designation		LV HRC fuse link
Current / for AC / rated value	A	125
Operating class of the fuse link		gG
Size of the fallback-system / acc. to DIN EN 60269-1		NH1
Supply voltage		
• for AC / rated value	V	690
• for DC	V	440
Switching capacity current		
• in accordance with IEC 60947-2 / rated value	kA	120
• with DC / in accordance with IEC 60947-2 / rated value	kA	25
Design of the fuse link		LV HRC fuse link
Design of an identification indicator		Front indicators
Mounting type		Non-insulated grip lugs
mounting position		Any, preferably vertical
Protection class IP		IP20, with connected conductors
Climatic class		-20 to +50 at 95% relative humidity
Ambient temperature	°C	-5 ... +40

Ambient temperature / during storage / note		Air humidity 90% at 20 °C
Design of the switching contact		Non-corroding, silver-plated
Net weight	g	272
Item designation		
<ul style="list-style-type: none"> • according to DIN EN 61346-2 • according to DIN EN 81346-2 		F F

Certificates/approvals:

General Product Approval		Declaration of Conformity	Test Certificates		
				Special Test Certificate	Type Test Certificates/Test Report
CCC	GOST	VDE	EG-Konf.		

other

[Environmental Confirmations](#)

Further information:

Information- and Downloadcenter (Catalogs, Brochures,...)

<http://www.siemens.com/lowvoltage/catalogs>

Industry Mall (Online ordering system)

<https://eb.automation.siemens.com/mall/en/WW/Catalog/Product/3NA3132-6>

Service&Support (Manuals, Certificates, Characteristics, FAQs,...)

<http://support.automation.siemens.com/WWW/view/en/3NA3132-6/all>

Image database (product images, 2D dimension drawings, 3D models, device circuit diagrams, ...)

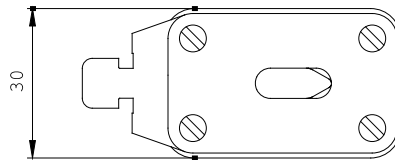
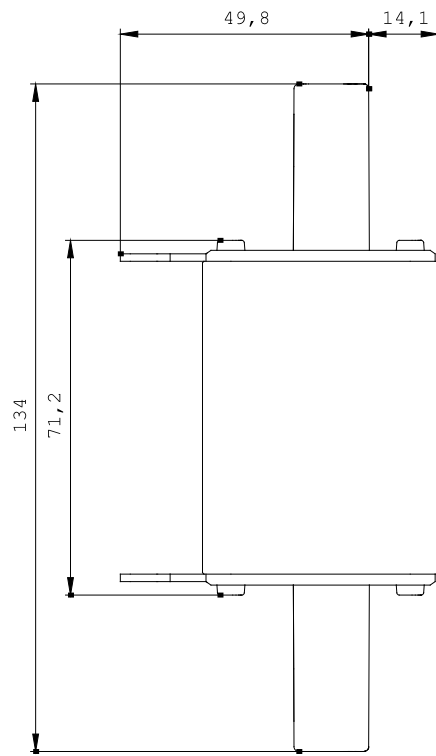
http://www.automation.siemens.com/bilddb/cax_en.aspx?mlfb=3NA3132-6

CAX-Online-Generator

<http://www.siemens.com/cax>

Tender specifications

[Datanorm GAEB81](#) [GAEB83](#) [RTF](#) [TXT](#)



last change:

Jul 14, 2014