

02414020

## Polyester Enclosure Standard

406 x 401 x 201 mm

Polyester Enclosure Standard 406 x 401 x 201 mm

[Catalogues](#)
[Declaration of Conformity](#)
[Drawing](#)
[3D Data](#)
[Assignmentplan](#)
[Terminal Mounting](#)

## Technical data

Höhe	406 mm
Breite	401 mm
Tiefe	201 mm
Material	Polyester
Colour	Squirrel Gray (RAL 7000)
Ingress protection	IP66
Degree of protection norm	EN 60529
Impact strength	IK09
temperature min.	-40 °C
temperature max.	90 °C
Seal material	CR-(Chloroprene)
Insulation	Fully insulated according to VDE 0100
Toxicity	Halogen free
Surface resistance	>10 <sup>12</sup> Ohm
Surface resistance norm	IEC 60093
Special colours on request	Yes
Approvals	Lloyd Register, Maritime Register, UL 508A

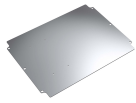
## Commercial data

Country of origin	IN
Order unit	1 Piece
Customs tariff number	39269097
Weight	8.3 kg
GTIN	4250157900760

## ETIM classification

ETIM 8	EC000058
--------	----------

## Accessories



**1001119**  
Mounting plate for 02.4140xx



**10027001**  
HINGE EXTERNAL / GREY



**10031102**  
Outer bracket fastening set M6



**10061427**  
DIN rail 35/7,5 for xx.234011



**10062011**  
Earth rail for 01.234011