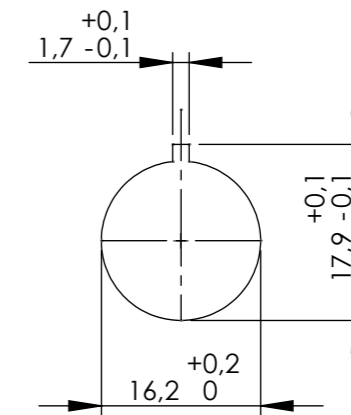
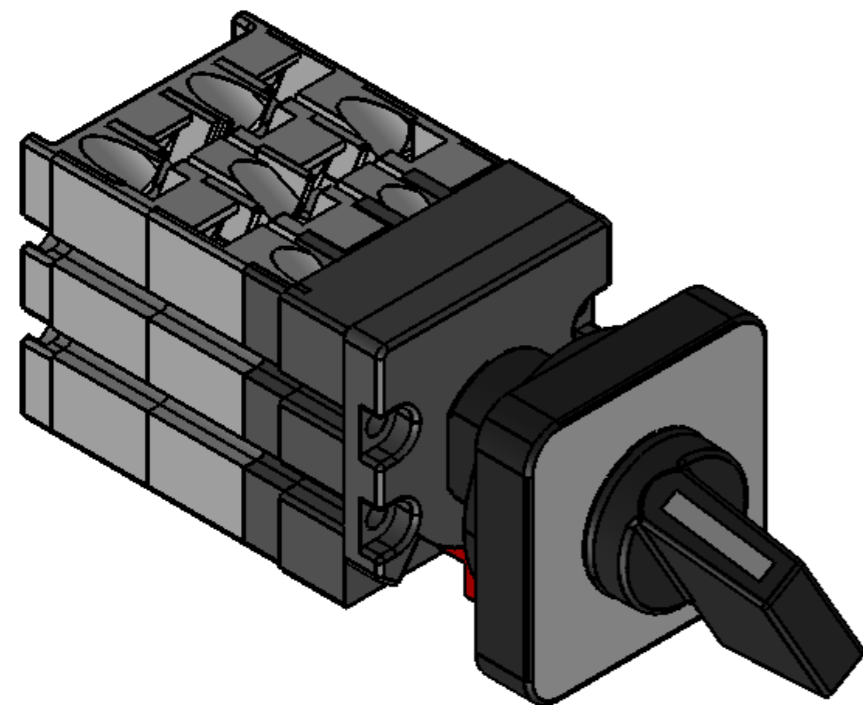


Bohrbild / Hole pattern



Schalertype / Switch type:
WOC149/6ZM/NS



Ue
Ith
AC23 (400V)
AC3 (400V)
Anschlussquerschnitt max / Connection cross
Drehmoment Klemmen / Torque clamps
Verlustleistung je Kontakt bei Nennstrom / Power loss 1 contact:
Umgebungstemperatur / Ambient temp:
Schutzart / Protection

500VAC
10A
3kW
2,2kW
1,5mm²
0,4Nm
0,4W
-30°C - +70°C
IP65