

Two-hand operation console for command devices, 22 mm, round,  
Enclosure material metal, enclosure top part gray, 3 control points,  
without equipment, with cable cut-outs for metric screw connections



<b>Product brand name</b>	SIRIUS ACT
<b>Product designation</b>	Two-hand operation console
<b>Product type designation</b>	3SU1

### Enclosure

<b>Design of the housing</b>	Two-hand operating console without standard equipment
<b>Material of the enclosure</b>	metal
<b>Number of command points</b>	3
<b>Color</b>	
• of top part of the enclosure	grey
<b>Delivery state</b>	
• as a kit	No
• pre-wired on strip terminal	No
<b>Mounting type of the enclosure</b>	Horizontal

### Actuator

<b>Design of the operating mechanism</b>	Unequipped
<b>Manner of function of the actuating element</b>	without
<b>Product feature</b>	
• lockout	No

• staggered switching	No
<b>Number of contact modules</b>	0

### General technical data

<b>Product function</b>	
• positive opening	No
• EMERGENCY OFF function	No
• EMERGENCY STOP function	No
<b>Product component</b>	
• Stand/pedestal	No
<b>Protection class IP</b>	IP66
<b>Degree of protection NEMA rating</b>	NEMA 1, 2, 3, 3R, 4, 4X, 12, 13
<b>Shock resistance</b>	
• acc. to IEC 60068-2-27	Sinusoidal half-wave 50 g / 11 ms
<b>Reference code acc. to DIN EN 81346-2</b>	U
<b>Reference code acc. to DIN EN 61346-2</b>	U

### Auxiliary circuit

<b>Number of NC contacts for auxiliary contacts</b>	0
<b>Number of NO contacts for auxiliary contacts</b>	0
<b>Number of CO contacts</b>	
• for auxiliary contacts	0

### Connections/Terminals

<b>Type of electrical connection on enclosure</b>	Cable routing at the rear 2 x M25
---	-----------------------------------

### Ambient conditions

<b>Ambient temperature</b>	
• during operation	-25 ... +70 °C
• during storage	-40 ... +80 °C
Environmental category during operation acc. to IEC 60721	3M6, 3S2, 3B2, 3C3, 3K6 (with relative air humidity of 10 ... 95 %, no condensation in operation permitted for all devices behind front panel)

### Installation/ mounting/ dimensions

<b>Height</b>	185.6 mm
<b>Width</b>	492.4 mm
<b>Depth</b>	159.5 mm

### Accessories

<b>Number of backing plates</b>	0
---------------------------------	---

### Certificates/approvals

General Product Approval	Declaration of Conformity
--------------------------	---------------------------



[Miscellaneous](#)

Test Certificates	Marine / Shipping
-------------------	-------------------

[Special Test Certificate](#)

[Type Test Certificates/Test Report](#)



Marine / Shipping	other
-------------------	-------



[Confirmation](#)

### Further information

**Information- and Downloadcenter (Catalogs, Brochures,...)**

<http://www.siemens.com/industrial-controls/catalogs>

**Industry Mall (Online ordering system)**

<https://mall.industry.siemens.com/mall/en/en/Catalog/product?mlfb=3SU1853-3AA00-0AA1>

**Cax online generator**

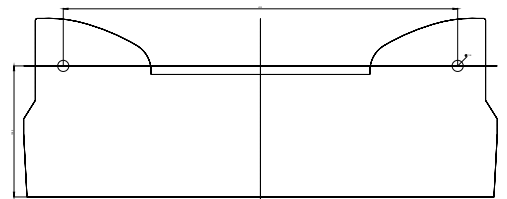
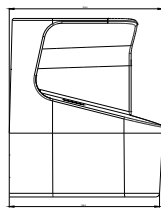
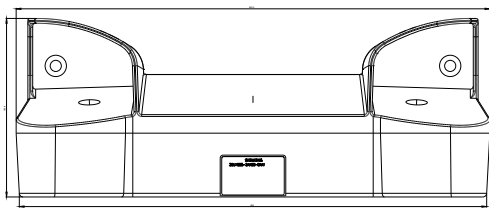
<http://support.automation.siemens.com/WW/CAXorder/default.aspx?lang=en&mlfb=3SU1853-3AA00-0AA1>

**Service&Support (Manuals, Certificates, Characteristics, FAQs,...)**

<https://support.industry.siemens.com/cs/ww/en/ps/3SU1853-3AA00-0AA1>

**Image database (product images, 2D dimension drawings, 3D models, device circuit diagrams, EPLAN macros, ...)**

[http://www.automation.siemens.com/bilddb/cax\\_de.aspx?mlfb=3SU1853-3AA00-0AA1&lang=en](http://www.automation.siemens.com/bilddb/cax_de.aspx?mlfb=3SU1853-3AA00-0AA1&lang=en)



last modified:

02/21/2019