

Residual current operated circuit breaker, 4-pole, Type AC, In: 40 A, 300 mA, Un AC: 400 V



Model	
Product brand name	SETRON
Product designation	RCCB
Design of the product	Instantaneous
General technical data	
Number of poles	4
Size of installation devices / acc. to DIN 43880	1
Protection against electrical shock	Finger and back-of-hand safe
Short-circuit current rating	10 kA
circuit-breaker / Design	5SV4
Mechanical service life (switching cycles) / typical	10 000
Switching function / short-term delayed	No
Overvoltage category	III
Supply voltage	
Supply voltage	
<ul style="list-style-type: none"> <li>• at AC / rated value</li> <li>• for testing equipment / minimum</li> </ul>	230/400 V 100 V
Supply voltage frequency	

- rated value

50 Hz

### Protection class

Protection class IP

IP20, if the distribution board is installed, with connected conductors

### Switching capacity

Switching capacity current / according to IEC 61008-1 / rated value

0.8 kA

### Dissipation

Power loss [W] / for rated value of the current / at AC / in hot operating state / per pole

2 W

### Electricity

Tripping residual current / rated value

300 mA

Tripping residual / rated value / derated current

- at 40 Cel 40 A
- at 45 Cel 38.1 A
- at 50 Cel 35.59 A
- at 55 Cel 32.29 A
- at 60 Cel 28.19 A
- at 65 Cel 23.3 A
- at 70 Cel 17.62 A

Type of fault current

AC

Current / at AC / rated value

40 A

I<sup>2</sup>t-value / permissible

41 000 A<sup>2</sup>·s

### Product details

Product feature / silicon-free

Yes

Product extension / can be installed / supplementary devices

Yes

### Number

Number of test cycles / for environmental testing / acc. to IEC 60068-2-30

28

### Connections

Connectable conductor cross-section / stranded

- minimum 0.75 mm<sup>2</sup>
- maximum 35 mm<sup>2</sup>

Connectable conductor cross-section / solid

- minimum 0.75 mm<sup>2</sup>
- maximum 35 mm<sup>2</sup>

Tightening torque / with screw-type terminals

- minimum 2.5 N·m
- maximum 3 N·m

Position / of power supply cord	top or bottom
---------------------------------	---------------

### Mechanical Design



Height	90 mm
Width	72 mm
Depth	70 mm
Mounting position	any
Installation depth	70 mm
Number of width units	4
Mounting type	DIN rail (REG)
Net weight	350 g

### Environmental conditions

Ambient temperature	
<ul style="list-style-type: none"> <li>• minimum</li> </ul>	-25 °C
<ul style="list-style-type: none"> <li>• maximum</li> </ul>	45 °C
<ul style="list-style-type: none"> <li>• during storage / minimum permissible</li> </ul>	-40 °C
<ul style="list-style-type: none"> <li>• during storage / maximum permissible</li> </ul>	75 °C

### Certificates

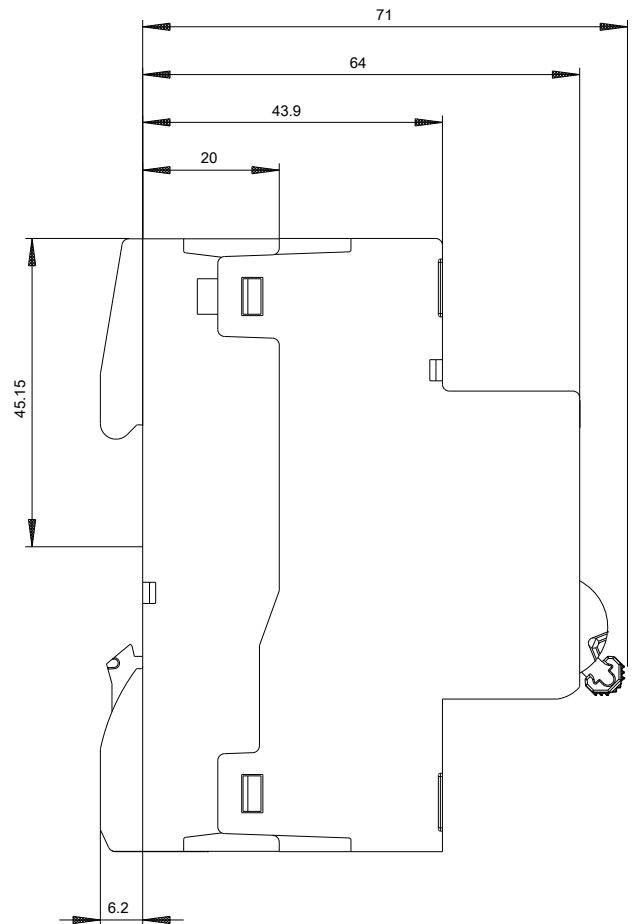
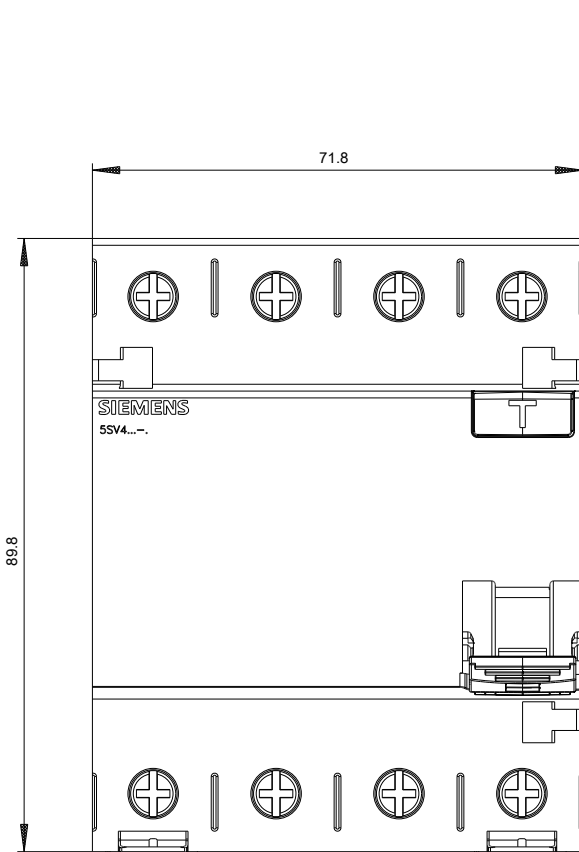
Reference code	
<ul style="list-style-type: none"> <li>• acc. to DIN EN 61346-2</li> </ul>	F
<ul style="list-style-type: none"> <li>• acc. to DIN EN 81346-2</li> </ul>	F

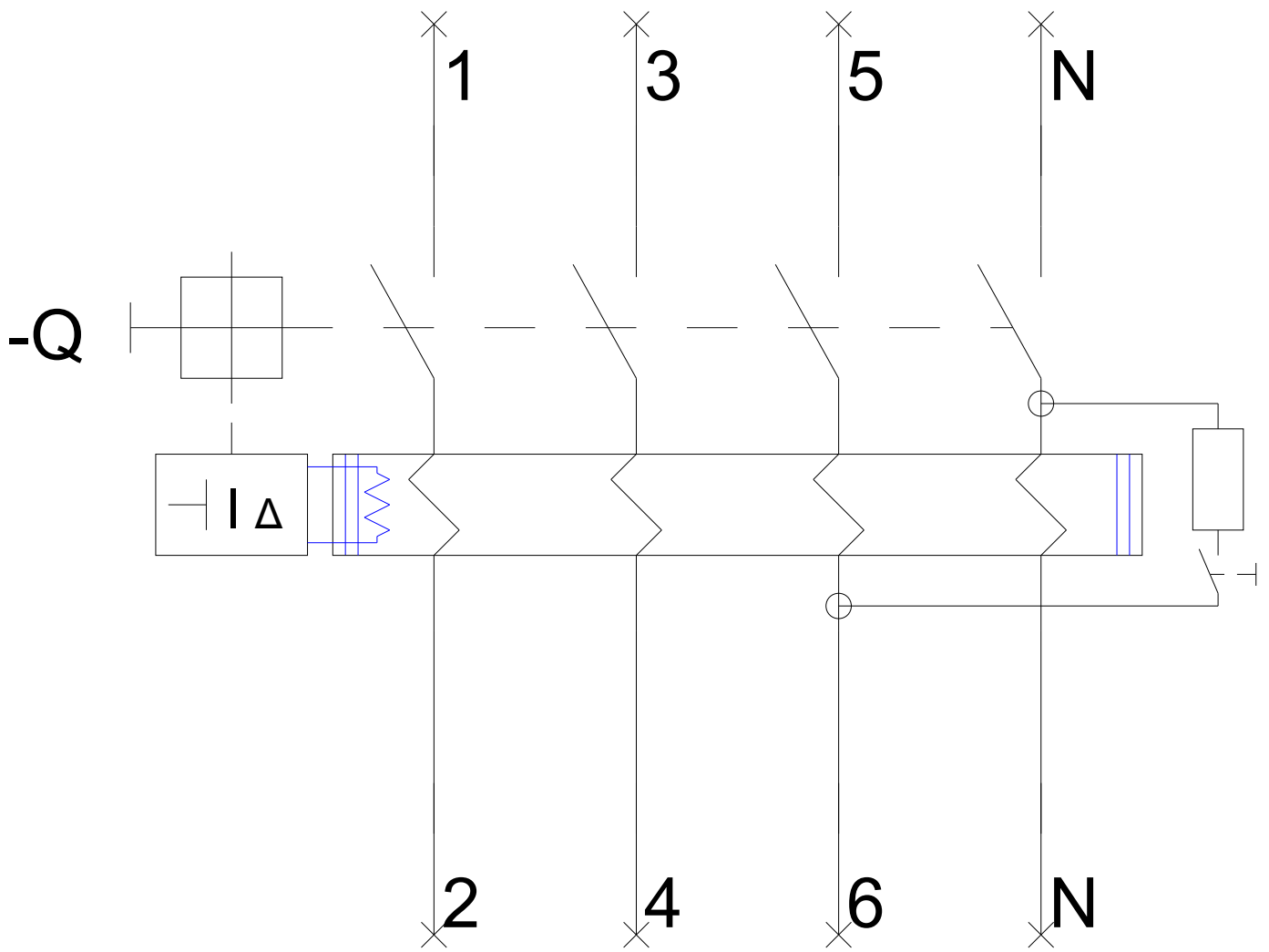
General Product Approval	Declaration of Conformity	other	Railway
 CCC	 EG-Konf.	<a href="#">Miscellaneous</a>	<a href="#">Vibration and Shock</a>

<b>Railway</b> <a href="#">Confirmation</a>
--

### Further information

- Information- and Downloadcenter (Catalogs, Brochures,...)**  
<http://www.siemens.com/lowvoltage/catalogs>
- Industry Mall (Online ordering system)**  
<https://mall.industry.siemens.com/mall/en/en/Catalog/product?mlfb=5SV4644-0>
- Service&Support (Manuals, Certificates, Characteristics, FAQs,...)**  
<https://support.industry.siemens.com/cs/ww/en/ps/5SV4644-0>
- Image database (product images, 2D dimension drawings, 3D models, device circuit diagrams, ...)**  
[http://www.automation.siemens.com/bilddb/cax\\_en.aspx?mlfb=5SV4644-0](http://www.automation.siemens.com/bilddb/cax_en.aspx?mlfb=5SV4644-0)





-CB



