

Cable-operated switch Metal enclosure, 2 xM20 x1,5; 1 NO+1 NC, Latching, ISO 13850 and pushbutton release, for wire lengths up to 25 m



Figure similar

Product brand name	SIRIUS
Product designation	cable-operated switch
Product type designation	3SE7

General technical data	
<b>Product function</b>	
• EMERGENCY STOP function	Yes
Product component Light source	No
<b>Insulation voltage</b>	
• rated value	400 V
<b>Degree of pollution</b>	class 3
<b>Surge voltage resistance rated value</b>	6 kV
<b>Protection class IP</b>	IP65
<b>Mechanical service life (switching cycles)</b>	
• typical	100 000
<b>Thermal current</b>	6 A
<b>Continuous current of the DIAZED fuse link gG</b>	6 A
<b>Number of NC contacts for auxiliary contacts</b>	1

<b>Number of NO contacts for auxiliary contacts</b>	1
<b>Number of CO contacts for auxiliary contacts</b>	0
<b>Operating current at AC-15</b>	
• at 240 V rated value	6 A
• at 400 V rated value	6 A
<b>Operating current at DC-13</b>	
• at 24 V rated value	3 A
• at 250 V rated value	0.27 A

Enclosure	
<b>Material of the enclosure</b>	metal
<b>Material of the enclosure cover</b>	Plastic
<b>Product component</b>	
• EMERGENCY STOP device	No
<b>Color</b>	
• of the enclosure	black
• of top part of the enclosure	grey
<b>Coating of the enclosure</b>	painted
<b>Circuit principle</b>	Jump function
<b>Material of the contact</b>	Silver
<b>Number of switching contacts safety-related</b>	1

Connections/Terminals	
<b>Type of electrical connection</b>	screw-type terminals
<b>Type of connectable conductor cross-sections</b>	
• solid	2x (0.5 ... 2.5 mm <sup>2</sup> )
• finely stranded with core end processing	2x (0.5 ... 2.5 mm <sup>2</sup> )
• at AWG conductors solid	2x (20 ... 14)
• at AWG conductors stranded	2x (20 ... 14)

Safety related data	
<b>B10 value</b>	
• with high demand rate acc. to SN 31920	100 000
<b>Proportion of dangerous failures</b>	
• with high demand rate acc. to SN 31920	50 %
<b>Cable entry type</b>	2x M20 x 1,5







Ambient conditions	
<b>Ambient temperature</b>	
• during operation	-25 ... +70 °C

Display	
<b>Product function status display</b>	Yes

Installation/ mounting/ dimensions	
<b>Mounting type</b>	screw fixing

Height	171 mm
Width	52 mm
Depth	54 mm

### Certificates/approvals

General Product Approval	Declaration of Conformity	Marine / Shipping
 CCC	 EG-Konf.	 ABS
 CSA		 LRS

Marine / Shipping	other
-------------------	-------



[Confirmation](#)

### Further information

**Information- and Downloadcenter (Catalogs, Brochures,...)**

<http://www.siemens.com/industrial-controls/catalogs>

**Industry Mall (Online ordering system)**

<https://mall.industry.siemens.com/mall/en/en/Catalog/product?mlfb=3SE7150-1BD00>

**Cax online generator**

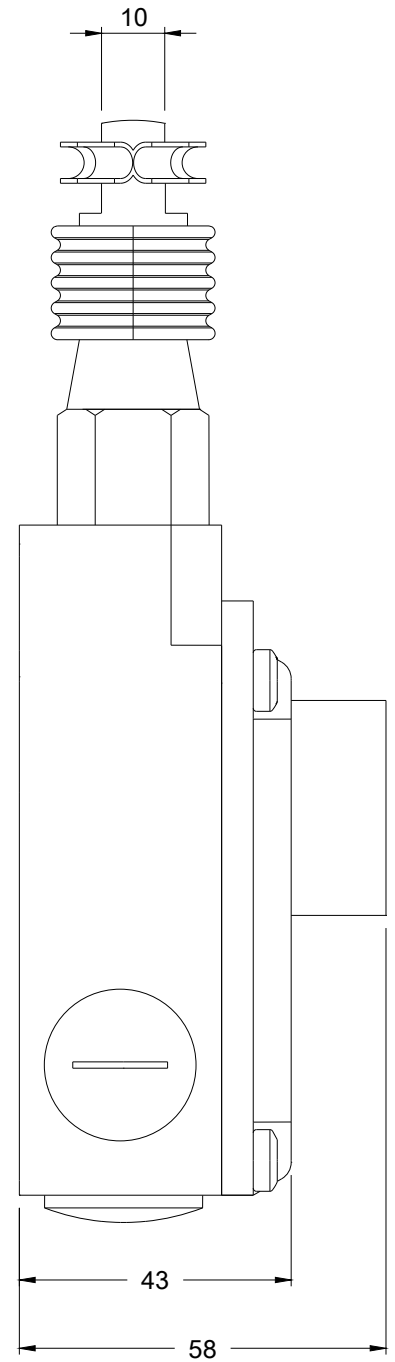
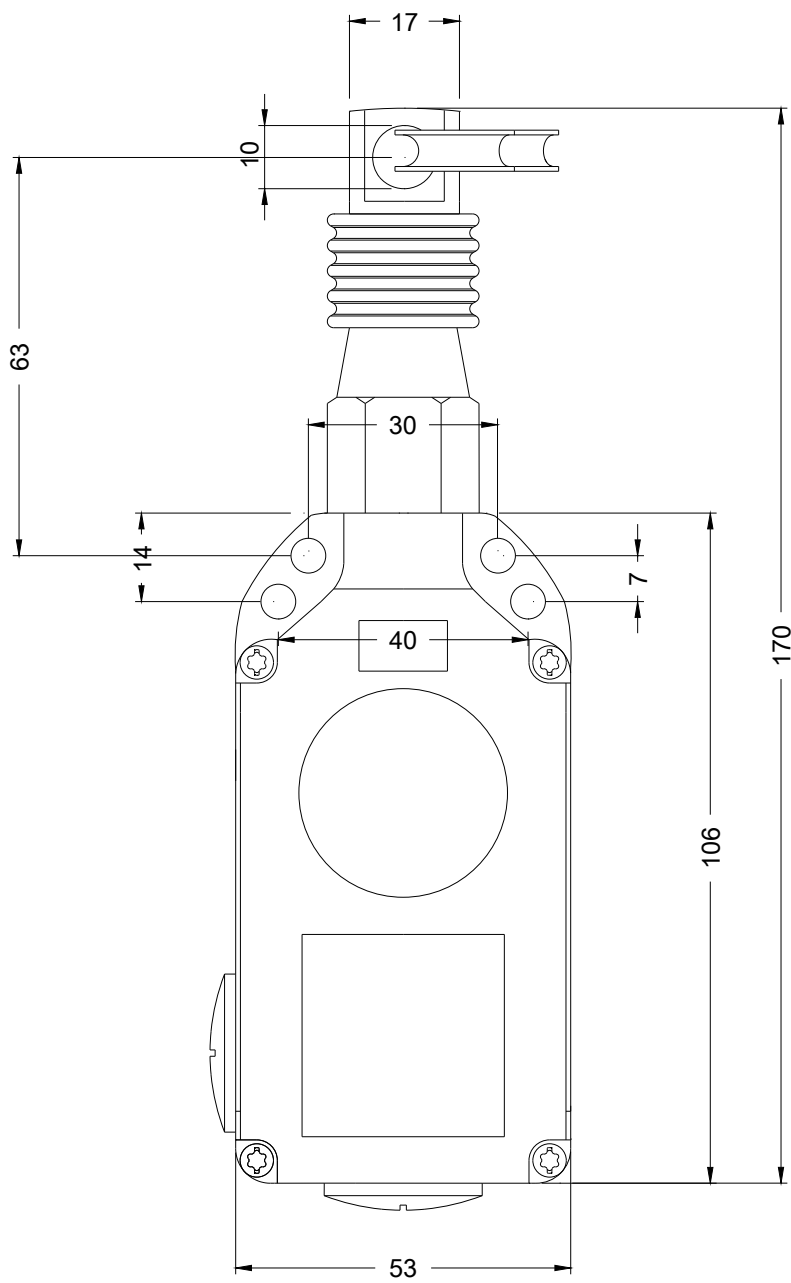
<http://support.automation.siemens.com/WW/CAXorder/default.aspx?lang=en&mlfb=3SE7150-1BD00>

**Service&Support (Manuals, Certificates, Characteristics, FAQs,...)**

<https://support.industry.siemens.com/cs/ww/en/ps/3SE7150-1BD00>

**Image database (product images, 2D dimension drawings, 3D models, device circuit diagrams, EPLAN macros, ...)**

[http://www.automation.siemens.com/bilddb/cax\\_de.aspx?mlfb=3SE7150-1BD00&lang=en](http://www.automation.siemens.com/bilddb/cax_de.aspx?mlfb=3SE7150-1BD00&lang=en)



last modified:

07/25/2018