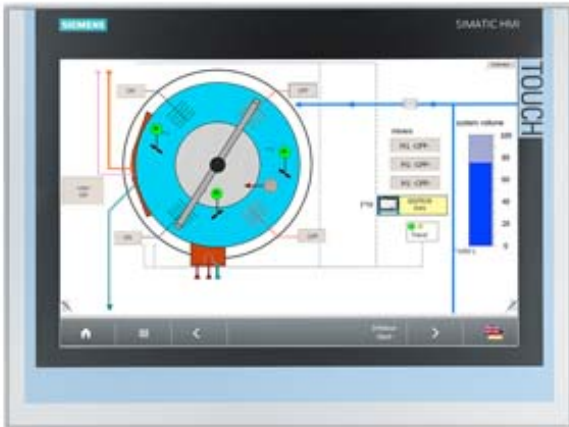


SIMATIC IFP1500 Flat Panel 15" display (16:10), Touch, Extended version up to 30 m, 1280x 800 pixels, for 24 V DC and 100-240 V AC, display port/DVI interface incl. DVI/USB cable 1.8 m



General information	
Product type designation	IFP1500
Short designation	Flat Panel 15" touch ext.
Display	
Design of display	TFT widescreen display, LED backlighting
Screen diagonal	15.4 in
Screen diagonal [cm]	40 cm
Display width	331.2 mm
Display height	207 mm
Viewing angle	170° x 170°
On Screen Display (OSD) configuration	No; Adjustable by means of software
Number of colors	16 777 216; 24 bit
Resolution (pixels)	
• Horizontal image resolution	1 280 Pixel
• Vertical image resolution	800 Pixel
• Pixel size, horizontal	0.259 mm
• Pixel size, vertical	0.259 mm
General features	

• Detachable from computer unit	5 m
• Brightness/contrast	400 cd/m ² / 1 000:1
• Luminance	400 cd/m ²
Backlighting	
• Type of backlighting	LED
• MTBF backlighting (at 25 °C)	50 000 h; At 25°C
• Backlight dimmable	Yes; 0-100 %
Control elements	
Keyboard fonts	
• Function keys	No
Touch operation	
• Design as touch screen	Yes; Analog-resistive
• Monitor keyboard	Yes
Installation type/mounting	
Built-in unit	Yes; Portrait mode possible
maximum permitted forward tilt angle from vertical	35°
maximum permitted backward tilt angle from vertical	35°
Supply voltage	
Type of supply voltage	AC/DC
Rated value (DC)	24 V
permissible range, lower limit (DC)	19.2 V
permissible range, upper limit (DC)	28.8 V
permissible range, lower limit (AC)	90 V
permissible range, upper limit (AC)	264 V
Power loss	
Power loss, typ.	40 W
Power loss, max.	65 W
Interfaces	
USB on the rear	2
Connection for keyboard/mouse	USB
Video interfaces	
• DVI-D	Yes
• DisplayPort	Yes; DisplayPort V1.1
Touch interfaces	
• USB	Yes
Degree and class of protection	
IP65 at front	Yes
Enclosure Type 4 at the front	Yes
NEMA4 at the front	No
NEMA4X at the front	No

IP20 rear	Yes
Standards, approvals, certificates	
CE mark	Yes
cULus	Yes; Corresponds to UL 508
RCM (formerly C-TICK)	Yes
KC approval	Yes
Use in hazardous areas	
• FM Class I Division 2	No
Ambient conditions	
Ambient temperature during operation	
• min.	0 °C
• max.	50 °C; Vertical installation (horizontal)
Ambient temperature during storage/transportation	
• min.	-20 °C
• max.	60 °C
Relative humidity	
• Operation, max.	95 %; no condensation
Vibrations	
• Vibration load in operation	1 gn
• Vibration load during transport/storage	1 gn
Shock testing	
• Shock load during operation	15 gn
• Shock load during transport/storage	15 gn
Mechanics/material	
Enclosure material (front)	
• Aluminum	Yes
Dimensions	
Width of the housing front	415 mm
Height of housing front	310 mm
Mounting cutout, width	396 mm; Tolerance: +1 mm
Mounting cutout, height	291 mm; Tolerance: +1 mm
Overall depth	62.5 mm
Weights	
Weight without packaging	3.9 kg
Weight incl. packaging	5 kg
last modified:	06/22/2018