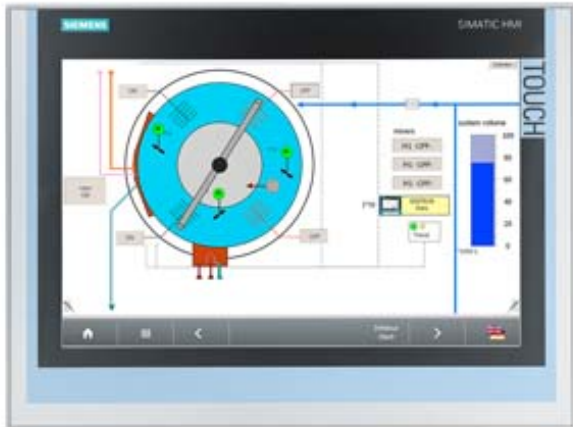


SIMATIC ITC 1500, Industrial Thin Client, 15" widescreen TFT display, Touch operation, Supported protocols: RDP, VNC, SMARTSERVER, Web



General information	
Product type designation	ITC1500
Display	
Design of display	TFT widescreen display, LED backlighting
Screen diagonal	15.4 in
Display width	331.2 mm
Display height	207 mm
Number of colors	16 777 216
Resolution (pixels)	
• Horizontal image resolution	1 280 Pixel
• Vertical image resolution	800 Pixel
Backlighting	
• Type of backlighting	LED, dimmable
• Backlight dimmable	Yes; 5-100 %
Control elements	
Touch operation	
• Design as touch screen	Yes
• Monitor keyboard	Yes

Installation type/mounting	
Built-in unit	Yes
Supply voltage	
Type of supply voltage	24 V DC
permissible range, lower limit (DC)	19.2 V
permissible range, upper limit (DC)	28.8 V
Input current	
Current consumption, max.	1.5 A
Starting current inrush I <sup>2</sup> t	0.5 A <sup>2</sup> ·s
Interfaces	
Number of industrial Ethernet interfaces	1
Number of USB interfaces	2; on rear
Connection for keyboard/mouse	USB
Industrial Ethernet	
• Transmission rate, max.	1 000 Mbit/s
Protocols	
Protocols (Ethernet)	
• TCP/IP	Yes
• DHCP	Yes
• SNMP	Yes
• DCP	Yes
• LLDP	Yes
WEB characteristics	
• HTTP	Yes
• HTML	Yes; HTML5
• XML	Yes
• CSS	Yes
• JavaScript	Yes
Protocols (terminal link)	
• Sm@rtServer	Yes
• RDP	Yes
• VNC viewer	Yes
• Citrix	No
• SINUMERIK	Yes
Degree and class of protection	
IP (at the front)	IP65
IP20 rear	Yes
Standards, approvals, certificates	
CE mark	Yes
cULus	Yes

RCM (formerly C-TICK)	Yes
KC approval	Yes
<b>Use in hazardous areas</b>	
<ul style="list-style-type: none"> <li>• cULus Class I Zone 1</li> </ul>	No
<ul style="list-style-type: none"> <li>• cULus Class I Zone 2, Division 2</li> </ul>	Yes; Available soon
<ul style="list-style-type: none"> <li>• FM Class I Division 2</li> </ul>	Yes; Available soon
<b>Ambient conditions</b>	
<b>Ambient temperature during operation</b>	
<ul style="list-style-type: none"> <li>• min.</li> </ul>	0 °C
<ul style="list-style-type: none"> <li>• max.</li> </ul>	50 °C
<b>Ambient temperature during storage/transportation</b>	
<ul style="list-style-type: none"> <li>• min.</li> </ul>	-20 °C
<ul style="list-style-type: none"> <li>• max.</li> </ul>	60 °C
<b>Relative humidity</b>	
<ul style="list-style-type: none"> <li>• Operation, max.</li> </ul>	90 %
<b>Software</b>	
Web browser	Yes
PDF reader	Yes
<b>Configuration</b>	
<b>Configuration</b>	
<ul style="list-style-type: none"> <li>• Local</li> </ul>	Yes
<ul style="list-style-type: none"> <li>• Remote</li> </ul>	Yes; With Remote Configuration Center (RCC) as of V2.0
<b>Languages</b>	
<b>Online languages</b>	
<ul style="list-style-type: none"> <li>• Number of online/runtime languages</li> </ul>	2; german / english
<b>Peripherals/Options</b>	
<b>Peripherals</b>	
<ul style="list-style-type: none"> <li>• Printer</li> </ul>	No
<ul style="list-style-type: none"> <li>• USB memory</li> </ul>	Yes; USB storage medium can be connected
Additional software components loadable	No
<b>Mechanics/material</b>	
<b>Enclosure material (front)</b>	
<ul style="list-style-type: none"> <li>• Aluminum</li> </ul>	Yes
<b>Dimensions</b>	
Width of the housing front	415 mm
Height of housing front	310 mm
Mounting cutout, width	396 mm
Mounting cutout, height	291 mm
Overall depth	75 mm

## Weights

Weight without packaging	5.2 kg
--------------------------	--------

Weight incl. packaging	5.7 kg
------------------------	--------

<b>last modified:</b>	02/14/2018
-----------------------	------------