

Residual current operated circuit breaker, 4-pole, type A, In: 40 A, 30 mA, Un AC: 400 V, SIGRES (harsh ambient conditions)



Model	
Product brand name	SENTRON
Product designation	RCCB
Design of the product	Instantaneous
Product variations	SIGRES (harsh ambient conditions)
General technical data	
Number of poles	4
Size of installation devices / acc. to DIN 43880	1
Protection against electrical shock	Finger and back-of-hand safe
Short-circuit current rating	10 kA
circuit-breaker / Design	5SV3
Mechanical service life (switching cycles) / typical	10 000
Switching function / short-term delayed	No
Overvoltage category	III
Supply voltage	
Supply voltage	
<ul style="list-style-type: none"> <li>for testing equipment / minimum</li> </ul>	195 V
Supply voltage frequency	

- rated value

50 Hz

### Protection class

Protection class IP	IP20, if the distribution board is installed, with connected conductors
---------------------	---

### Switching capacity

Switching capacity current / according to IEC 61008-1 / rated value	0.8 kA
---	--------

### Dissipation

Power loss [W]	1.9 W
<ul style="list-style-type: none"> <li>• for rated value of the current / at AC / in hot operating state / per pole</li> </ul>	

### Electricity

Tripping residual current / rated value	30 mA
Type of fault current	A
Current / at AC / rated value	40 A
I <sup>2</sup> t-value / permissible	44 880 A <sup>2</sup> ·s
Surge current resistance / rated value	1 kA

### Product details

Product feature / silicon-free	Yes
Product extension / can be installed / supplementary devices	Yes

### Number

Number of test cycles / for environmental testing / acc. to IEC 60068-2-30	28
--	----

### Connections

Connectable conductor cross-section / stranded	0.75 mm <sup>2</sup> 35 mm <sup>2</sup>
<ul style="list-style-type: none"> <li>• minimum</li> <li>• maximum</li> </ul>	
Connectable conductor cross-section / solid	0.75 mm <sup>2</sup> 35 mm <sup>2</sup>
<ul style="list-style-type: none"> <li>• minimum</li> <li>• maximum</li> </ul>	
Tightening torque / with screw-type terminals	2.5 N·m 3 N·m
<ul style="list-style-type: none"> <li>• minimum</li> <li>• maximum</li> </ul>	
Position / of power supply cord	top or bottom

### Mechanical Design

Height	90 mm
Width	72 mm
Depth	70 mm
Mounting position	any

Installation depth	70 mm
Number of width units	4
Mounting type	DIN rail (REG)

#### Certificates

- Reference identifier / acc. to DIN EN 61346-2 F
- Reference identifier / acc. to DIN EN 81346-2 F

#### General Product Approval

#### Declaration of Conformity



CCC



ÖVE



VDE

[Miscellaneous](#)



EG-Konf.

#### Further information

##### Information- and Downloadcenter (Catalogs, Brochures,...)

<http://www.siemens.com/lowvoltage/catalogs>

##### Industry Mall (Online ordering system)

<https://mall.industry.siemens.com/mall/en/en/Catalog/product?mlfb=5SV3344-6KK12>

##### Service&Support (Manuals, Certificates, Characteristics, FAQs,...)

<https://support.industry.siemens.com/cs/ww/en/ps/5SV3344-6KK12>

##### Image database (product images, 2D dimension drawings, 3D models, device circuit diagrams, ...)

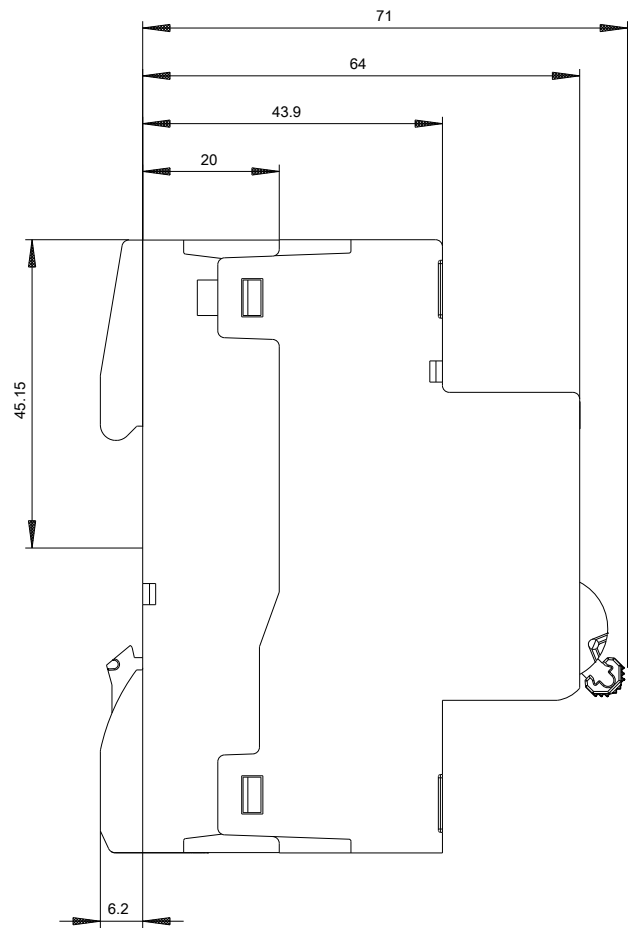
[http://www.automation.siemens.com/bilddb/cax\\_en.aspx?mlfb=5SV3344-6KK12](http://www.automation.siemens.com/bilddb/cax_en.aspx?mlfb=5SV3344-6KK12)

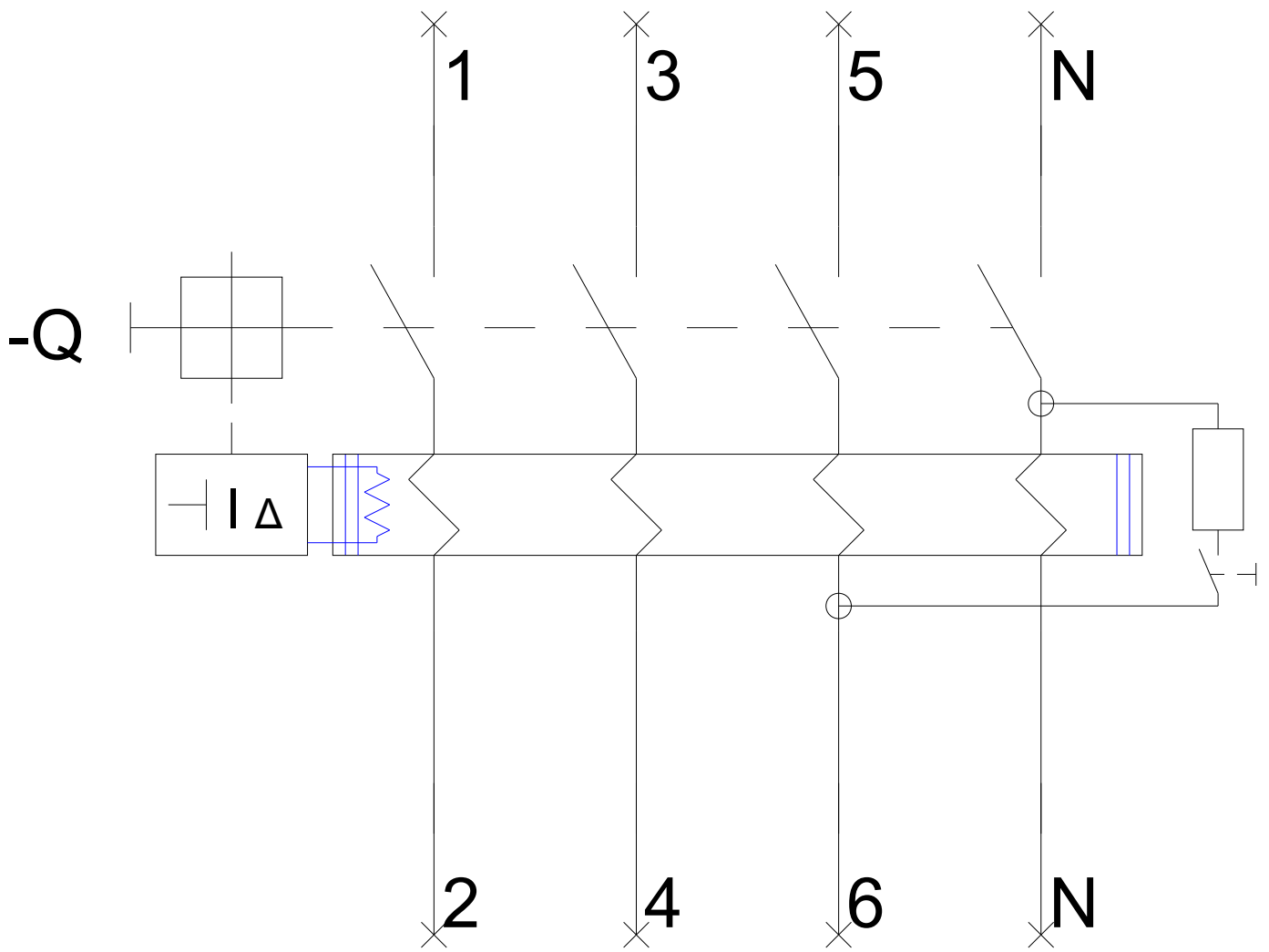
##### CAX-Online-Generator

<http://www.siemens.com/cax>

##### Tender specifications

<http://www.siemens.com/specifications>





-CB

