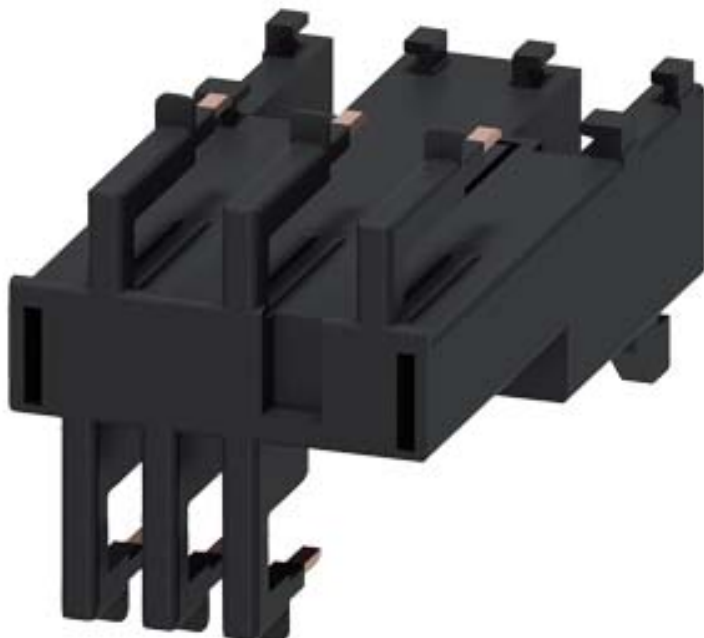


Link module Electrical and mechanical for 3RV2011 and 3RT201. Spring-type terminal







General technical data

product brandname		SIRIUS
Product designation		link module
Design of the product		actuating voltage contactor: AC and DC
Size of the circuit-breaker		S00
Size of contactor		S00

Installation/ mounting/ dimensions

Mounting type		clip-on
---------------	--	---------

Certificates/approvals

General Product Approval			Declaration of Conformity	Test Certificates	
 CSA	 UL		 EG-Konf.	Type Test Certificates/Test Report	Special Test Certificate

Shipping Approval					other
 ABS	 BUREAU VERITAS	 GL	 PRS	 RINA	Confirmation

Further information

Information- and Downloadcenter (Catalogs, Brochures,...)

<http://www.siemens.com/industrial-controls/catalogs>

Industry Mall (Online ordering system)

<https://mall.industry.siemens.com/mall/en/en/Catalog/product?mlfb=3RA2911-2AA00>

Cax online generator

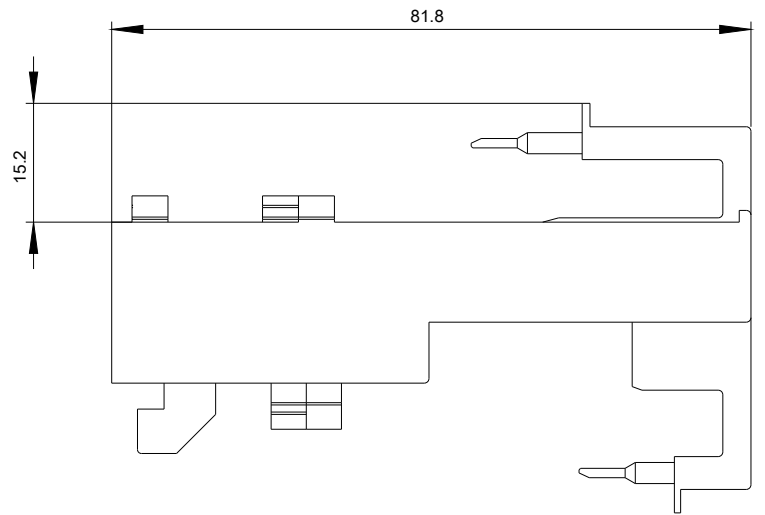
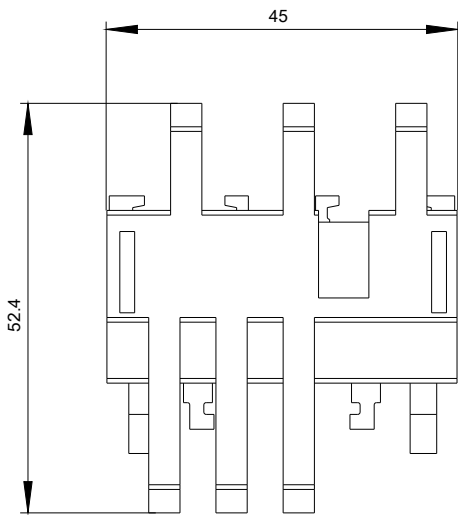
<http://support.automation.siemens.com/WW/CAXorder/default.aspx?lang=en&mlfb=3RA2911-2AA00>

Service&Support (Manuals, Certificates, Characteristics, FAQs,...)

<https://support.industry.siemens.com/cs/ww/en/ps/3RA2911-2AA00>

Image database (product images, 2D dimension drawings, 3D models, device circuit diagrams, EPLAN macros, ...)

http://www.automation.siemens.com/bilddb/cax_de.aspx?mlfb=3RA2911-2AA00&lang=en



last modified:

12/11/2017