

SENTRON, Switch disconnecter 3LD, main switch, 3-pole, Iu: 25 A, Operating power / at AC-23 A at 400 V: 9.5 kW, front-mounted, rotary operating mechanism, black, 4-hole mounting of the handle



Model	
Product brand name	SENTRON
Product designation	3LD Switch disconnecter
Design of the product	Main switch
Display version / for switch position indicator manual operation	1 ON - 0 OFF
Design of the operating mechanism	Short rotary knob
Design of handle	rotary operating mechanism, black
Type of the driving mechanism / motor drive	No

General technical data	
Number of poles	3
Type of device	fixed mounting
Type of switch	front mounted
Size of switch disconnecter	2
Operating frequency / maximum	50 1/h

Voltage	
Insulation voltage / rated value	690 V
Surge voltage resistance / rated value	6 kV

Protection class	
<b>Protection class IP</b>	IP65
Protection class IP / on the front	IP65

Dissipation	
<b>Power loss [W]</b>	1.1 W
<ul style="list-style-type: none"> <li>• for rated value of the current / at AC / in hot operating state / per pole</li> </ul>	

Electricity	
Current / at AC / rated value	25 A
Continuous current / rated value	25 A
Short-time current resistance (I <sub>cw</sub> ) / at 690 V / limited to 1 s / rated value	640 A

Main circuit	
<b>Operating frequency</b>	
<ul style="list-style-type: none"> <li>• initial value</li> </ul>	50 Hz
<ul style="list-style-type: none"> <li>• Full-scale value</li> </ul>	60 Hz
<b>Operating power</b>	
<ul style="list-style-type: none"> <li>• at AC-23 A / at 400 V / rated value</li> </ul>	9.5 kW
<ul style="list-style-type: none"> <li>• at AC-23 A / at 690 V / rated value</li> </ul>	9.5 kW
<ul style="list-style-type: none"> <li>• at AC-3 / at 400 V / rated value</li> </ul>	7.5 kW
<ul style="list-style-type: none"> <li>• at AC-3 / at 690 V / rated value</li> </ul>	7.5 kW
<b>Operating voltage</b>	
<ul style="list-style-type: none"> <li>• at AC / at 50/60 Hz / rated value</li> </ul>	690 V

Auxiliary circuit	
<b>Operating voltage / of auxiliary contacts / at AC / maximum</b>	500 V
<b>Continuous current / of the auxiliary contact / rated value</b>	10 A
<b>Insulation voltage / of the auxiliary switch / rated value</b>	500 V

Suitability	
<b>Suitability for use</b>	
<ul style="list-style-type: none"> <li>• Main switch</li> </ul>	Yes
<ul style="list-style-type: none"> <li>• switch disconnecter</li> </ul>	Yes
<ul style="list-style-type: none"> <li>• EMERGENCY OFF switch</li> </ul>	No
<ul style="list-style-type: none"> <li>• safety switch</li> </ul>	Yes
<ul style="list-style-type: none"> <li>• maintenance/repair switch</li> </ul>	Yes

Product details	
Product feature / interlock	Yes
Product extension / optional	
<ul style="list-style-type: none"> <li>• motor drive</li> </ul>	No

- Voltage trigger

No

**Short-time current resistance (I<sub>cw</sub>) / limited to 1 s / rated value**

640 A

### Connections

**Type of electrical connection**

- for main current circuit
- for auxiliary contacts

Box terminal  
connection terminals

### Requirements

**Design of the fuse link**

- for short-circuit protection of the main circuit / required
- for short-circuit protection of the auxiliary switch / required

fuse gL/gG: 25 A

fuse gL/gG: 10 A

### Mechanical Design

**Height**

84 mm

**Width**

67 mm

**Depth**

92.5 mm

**Mounting type**

Built-in unit fixed-mounted version

**Mounting type**

- front mounting with 4-hole attachment
- front mounting with central attachment
- rail mounting

Yes

No

No

**Net weight**

189 g

### Certificates

- Reference identifier / acc. to DIN EN 61346-2
- Reference identifier / acc. to DIN EN 81346-2

S

SF

### General Product Approval

### Declaration of Conformity



[Miscellaneous](#)



**Test Certificates**

**Shipping Approval**

**other**

[Special Test Certificate](#)



[Environmental Confirmations](#)

### Further information

**Information- and Downloadcenter (Catalogs, Brochures,...)**

<http://www.siemens.com/lowvoltage/catalogs>

**Industry Mall (Online ordering system)**

<https://mall.industry.siemens.com/mall/en/en/Catalog/product?mlfb=3LD2103-0TK51>

**Service&Support (Manuals, Certificates, Characteristics, FAQs,...)**

<https://support.industry.siemens.com/cs/ww/en/ps/3LD2103-0TK51>

**Image database (product images, 2D dimension drawings, 3D models, device circuit diagrams, ...)**

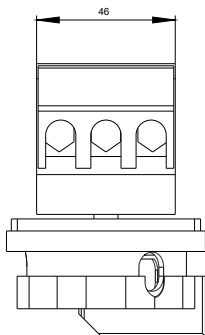
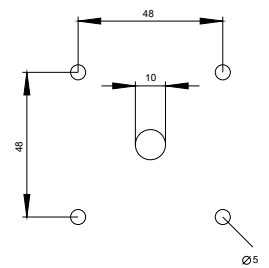
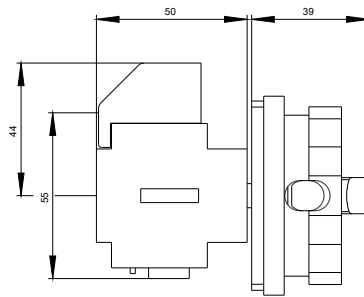
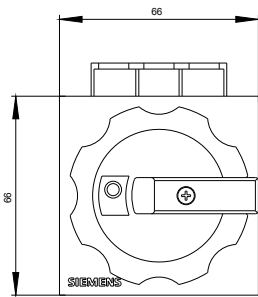
[http://www.automation.siemens.com/bilddb/cax\\_en.aspx?mlfb=3LD2103-0TK51](http://www.automation.siemens.com/bilddb/cax_en.aspx?mlfb=3LD2103-0TK51)

**CAX-Online-Generator**

<http://www.siemens.com/cax>

**Tender specifications**

<http://www.siemens.com/specifications>



**-Q1**

